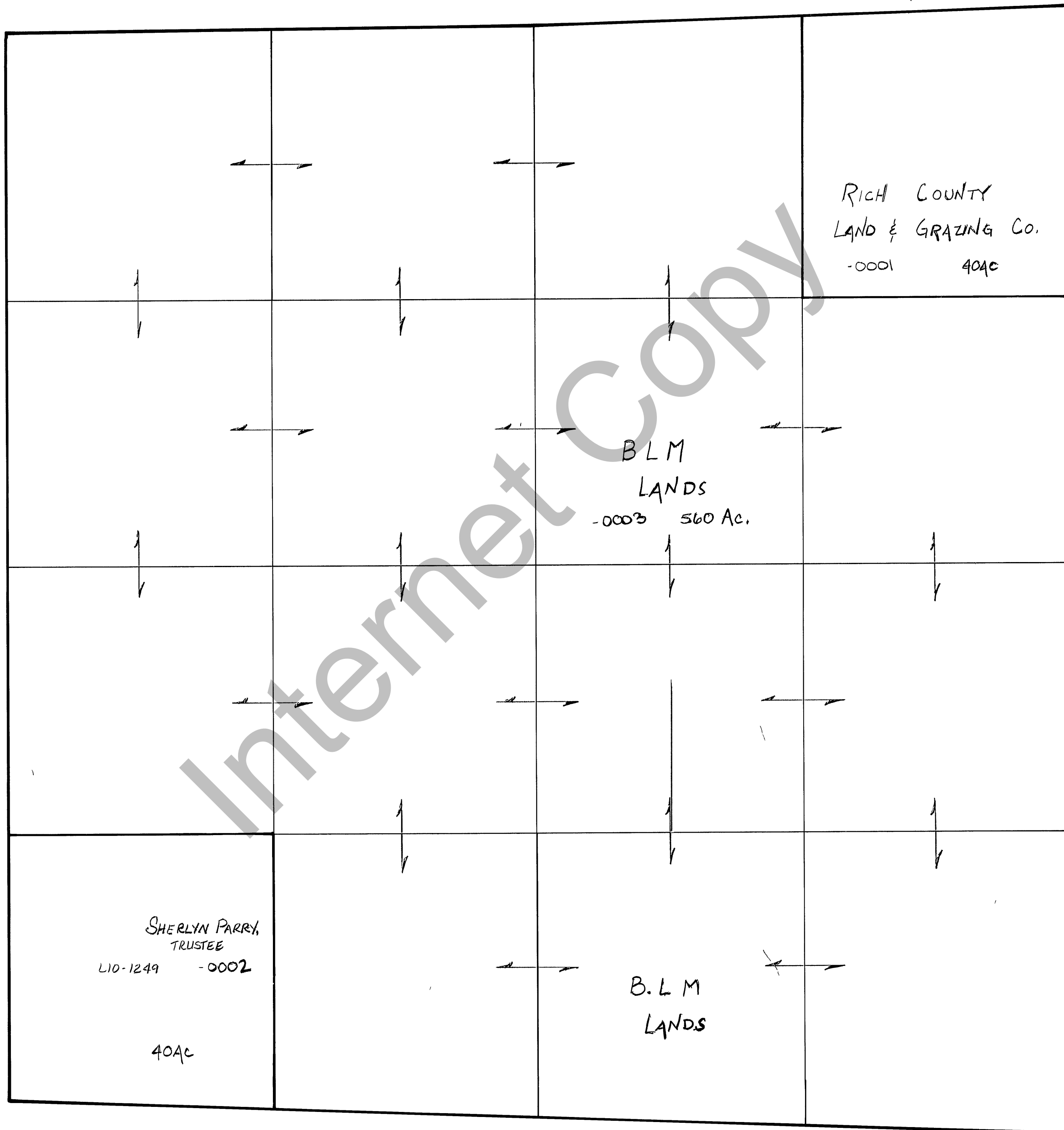


RICH COUNTY
SECTION 13, T. 12 N. R. 6 E., S.L.B. & M.

SERIAL NO = 32-13-000-Parcel



REVISIONS	

THIS PLAT IS MADE SOLELY FOR THE PURPOSE OF ASSISTING IN LOCATING THE LAND, AND THE RECORDER ASSUMES NO LIABILITY FOR VARIATIONS IF ANY, WITH AN ACTUAL SURVEY

Section 13 T 12 N. R 6E

book page

drawn by DW date 12-79

scale 1" = 400'