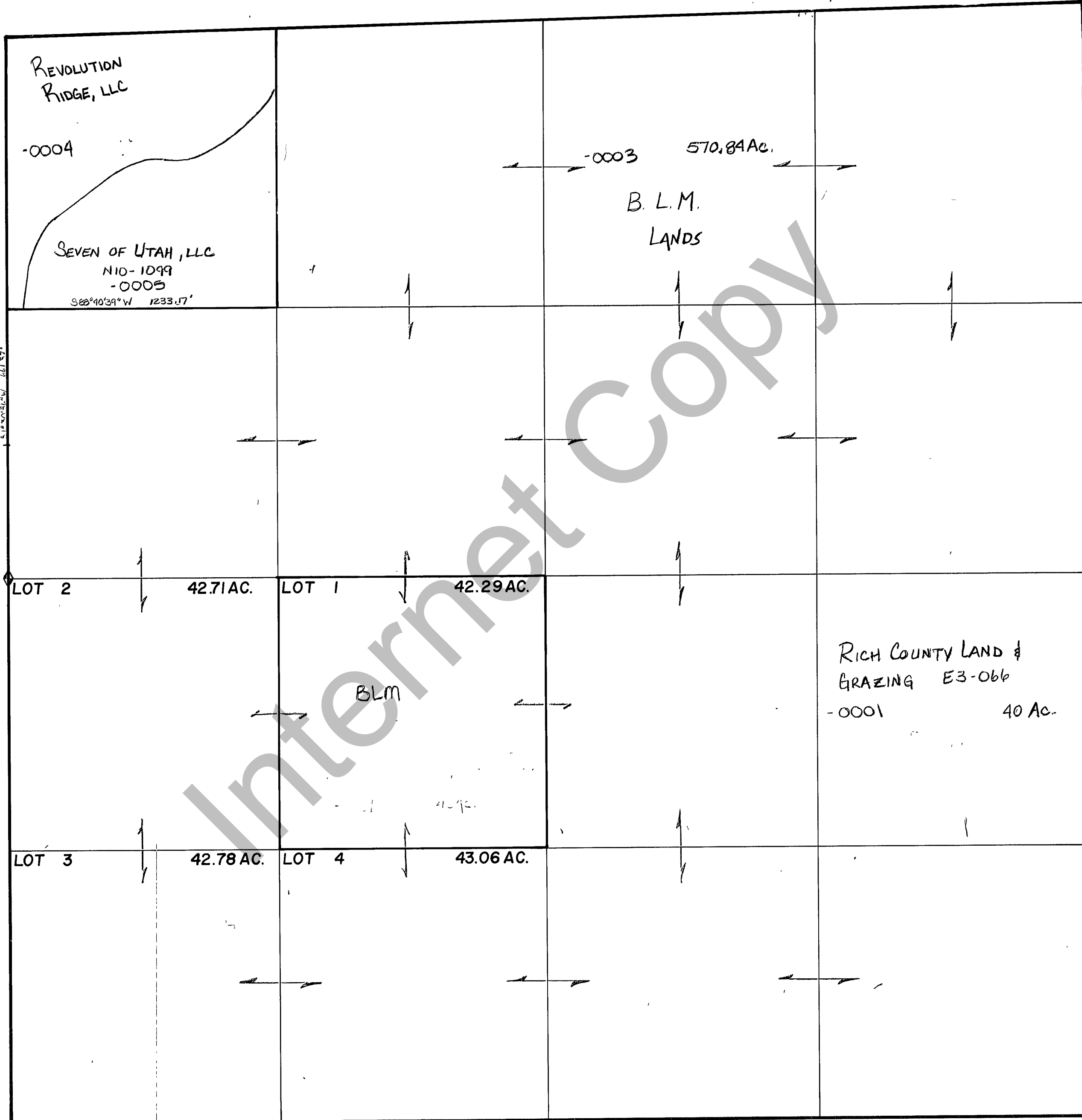


RICH COUNTY
SECTION 10 , T. 12 N.R. 6 E., S.L.B.&M.

SERIAL NO.= 32-10-000-Parcel



T.M.S.

REVISIONS		

THIS PLAT IS MADE SOLELY FOR THE PURPOSE OF ASSISTING IN LOCATING THE LAND, AND THE RECORDER ASSUMES NO LIABILITY FOR VARIATIONS, IF ANY, WITH AN ACTUAL SURVEY.

Section 10 T. 12 N. R. 6 E.		book	page
drawn by DW	date 12-79	scale 1" = 400'	