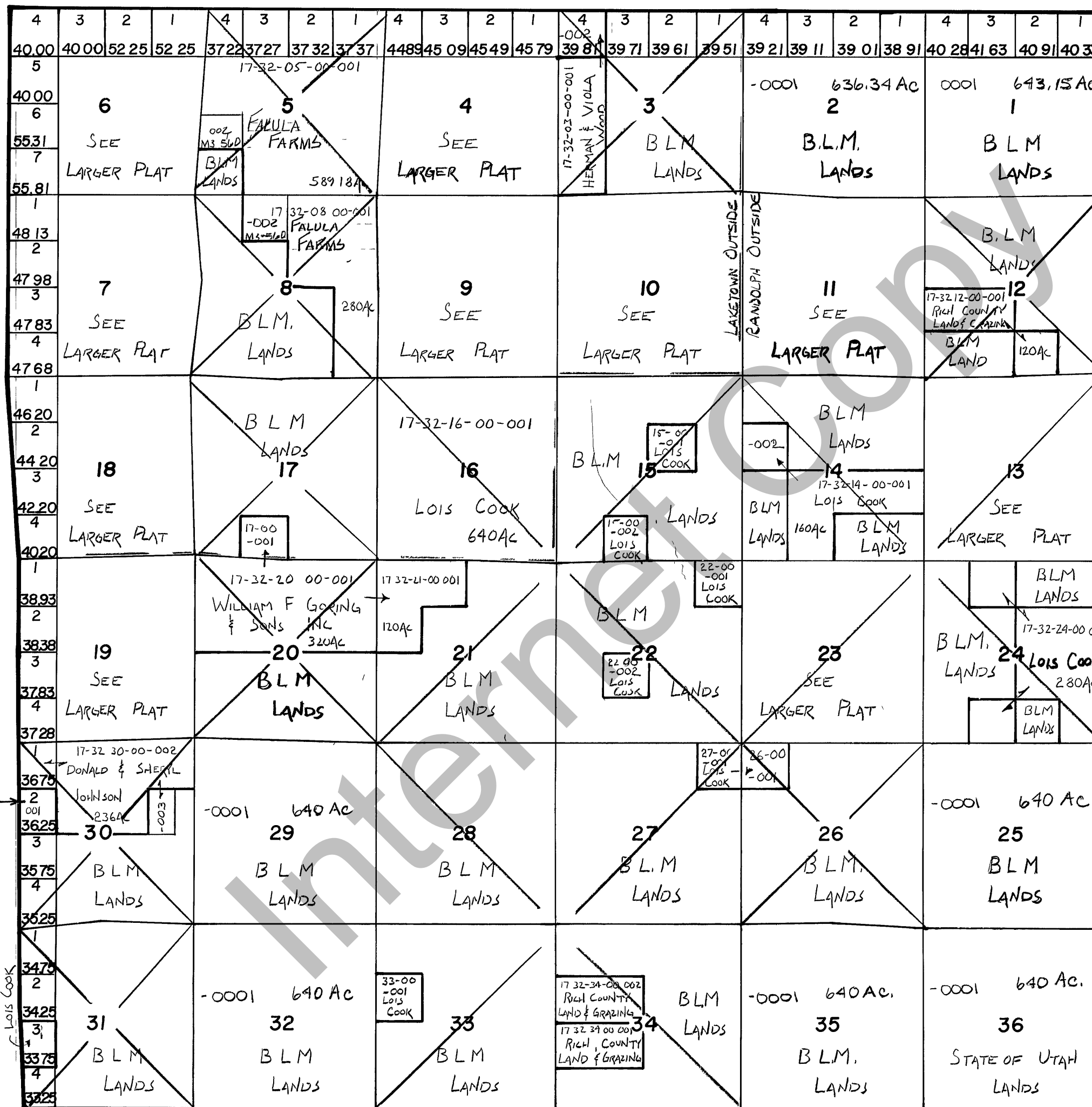


RICH COUNTY

T.12 N.R.6 E., S.L.B.&M.

SERIAL NO = 32-SEC-000-Parcel



MEADOW PINES →

17-32-31-00-001
LOIS COOK

REVISIONS	

THIS PLAT IS MADE SOLELY FOR THE PURPOSE OF ASSISTING IN LOCATING THE LAND, AND THE RECORDER AS SUMES NO LIABILITY FOR VARIATIONS IF ANY, WITH AN ACTUAL SURVEY

Section <u>T 12N R 6E</u>	book _____ page _____
drawn by DW	date 12-79
scale 1"=3000'	

TMS.