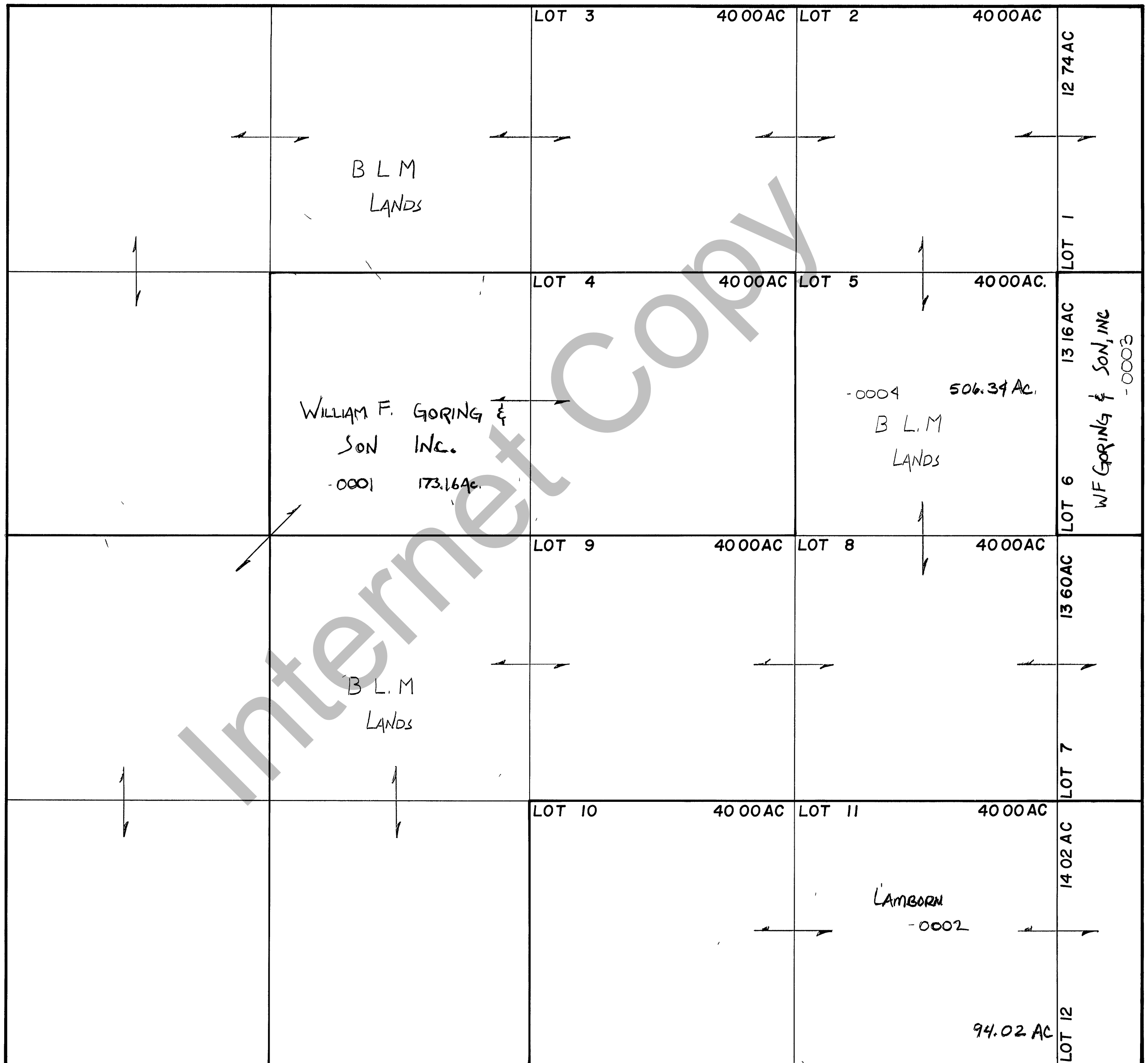


RICH COUNTY
SECTION 24, T. 12 N. R. 5 E., S.L.B. & M.

SERIAL NO = 31-24-000-Parcel



REVISIONS		

THIS PLAT IS MADE SOLELY FOR THE PURPOSE OF ASSISTING IN LOCATING THE LAND, AND THE RECORDER ASSUMES NO LIABILITY FOR VARIATIONS, IF ANY, WITH AN ACTUAL SURVEY.

Section 24 T 12N R 5E.

book page

drawn by DW date 11-79

scale 1" = 400'