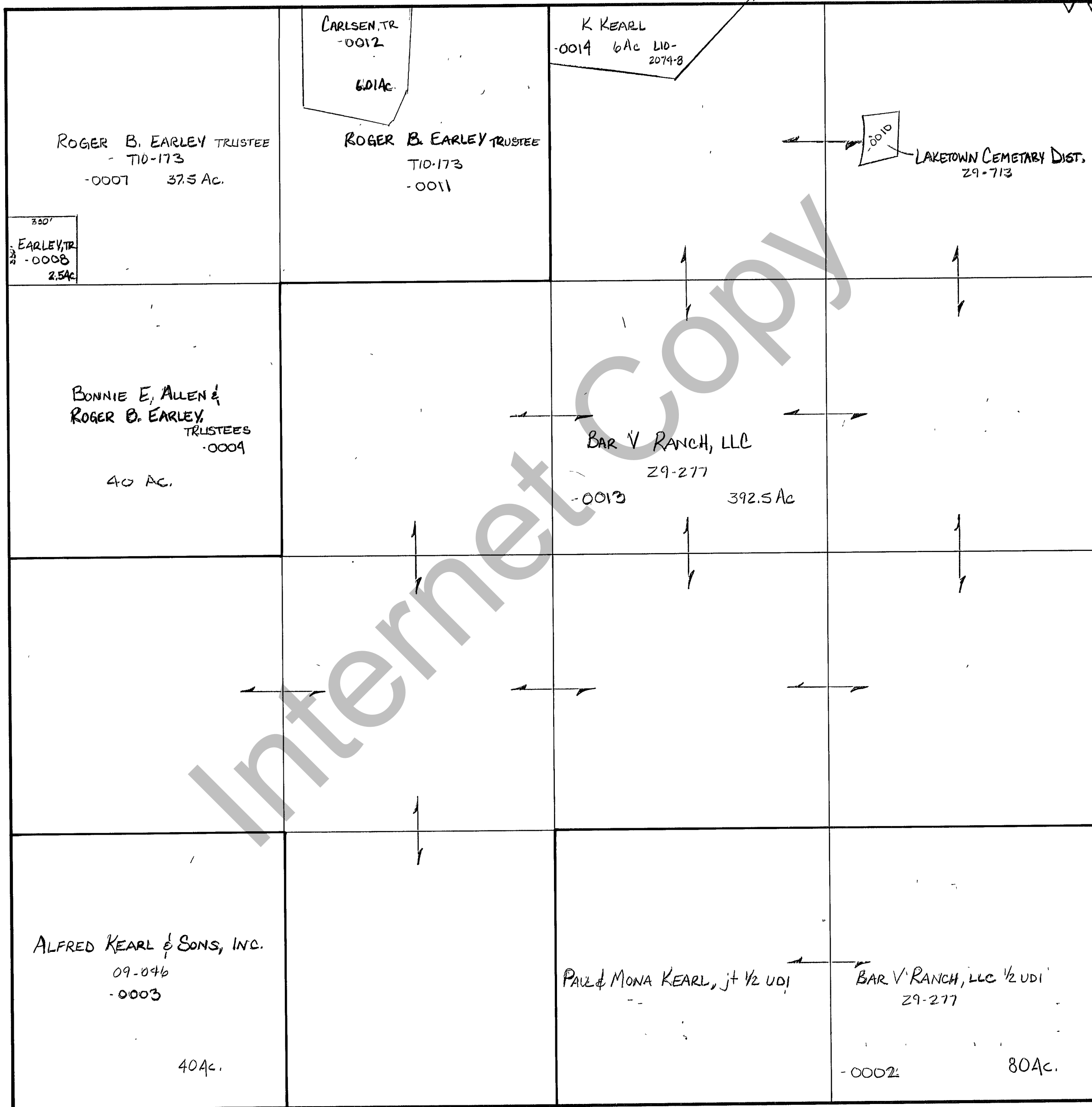


RICH COUNTY
SECTION 15 , T. 12 N.R. 5 E.,S.L.B.&M.

SERIAL NO.= 31-15-000-Parcel



REVISIONS		

THIS PLAT IS MADE SOLELY FOR THE PURPOSE OF ASSISTING IN LOCATING THE LAND, AND THE RECORDER ASSUMES NO LIABILITY FOR VARIATIONS, IF ANY, WITH AN ACTUAL SURVEY.

Section 15 T. 12N. R. 5E.
drawn by DW date 11-79

book page
scale 1"=400'