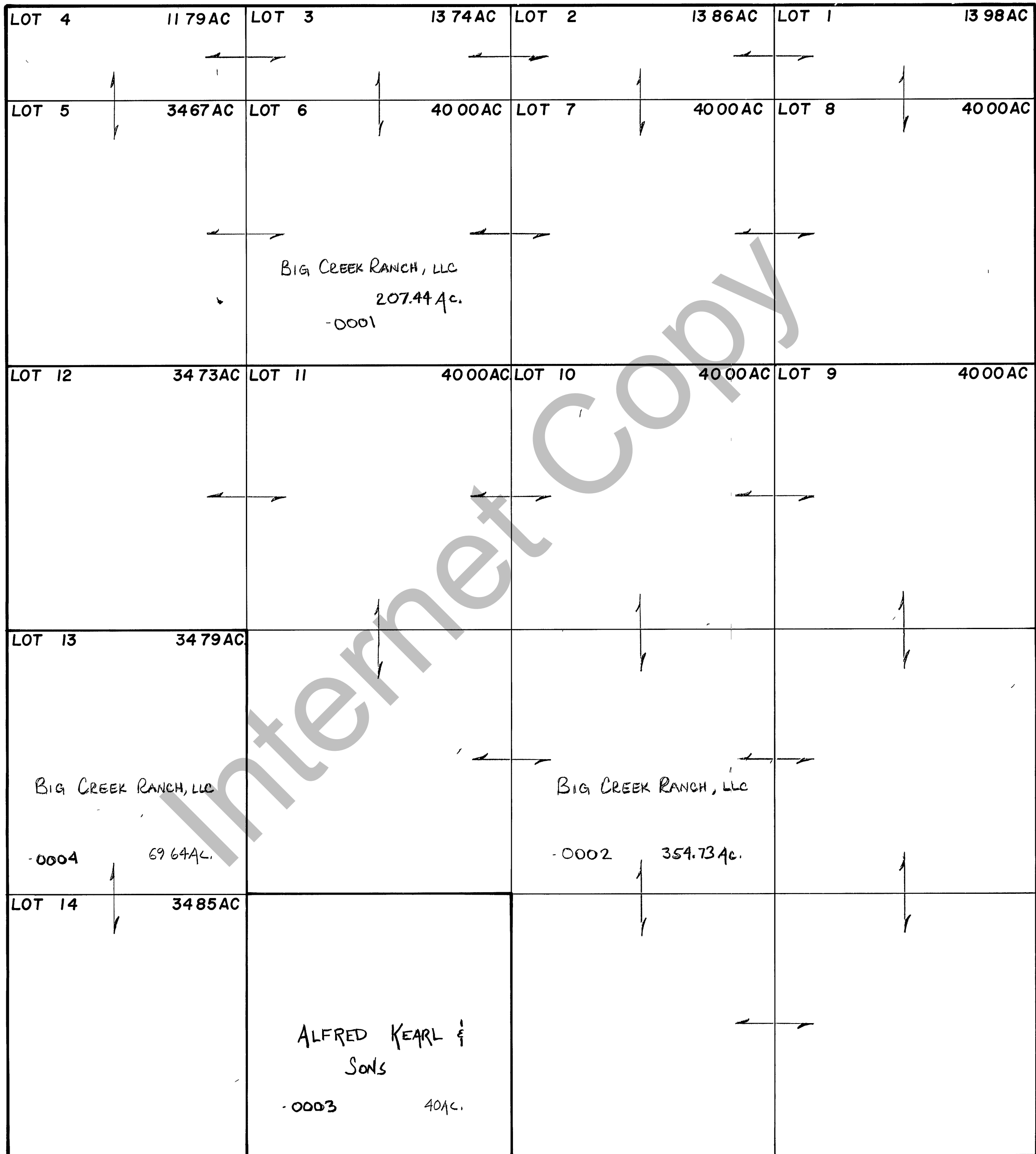


RICH COUNTY

SECTION 6, T. 12 N. R. 5 E., S.L.B. & M.

SERIAL NO. = 31-06-000-Parcel



REVISIONS	

THIS PLAT IS MADE SOLELY FOR THE PURPOSE OF ASSISTING IN LOCATING THE LAND, AND THE RECORDER ASSUMES NO LIABILITY FOR VARIATIONS, IF ANY, WITH AN ACTUAL SURVEY

Section 6 T 12 N, R 5 E

book page

drawn by DW

date 12-79

scale 1" = 400'