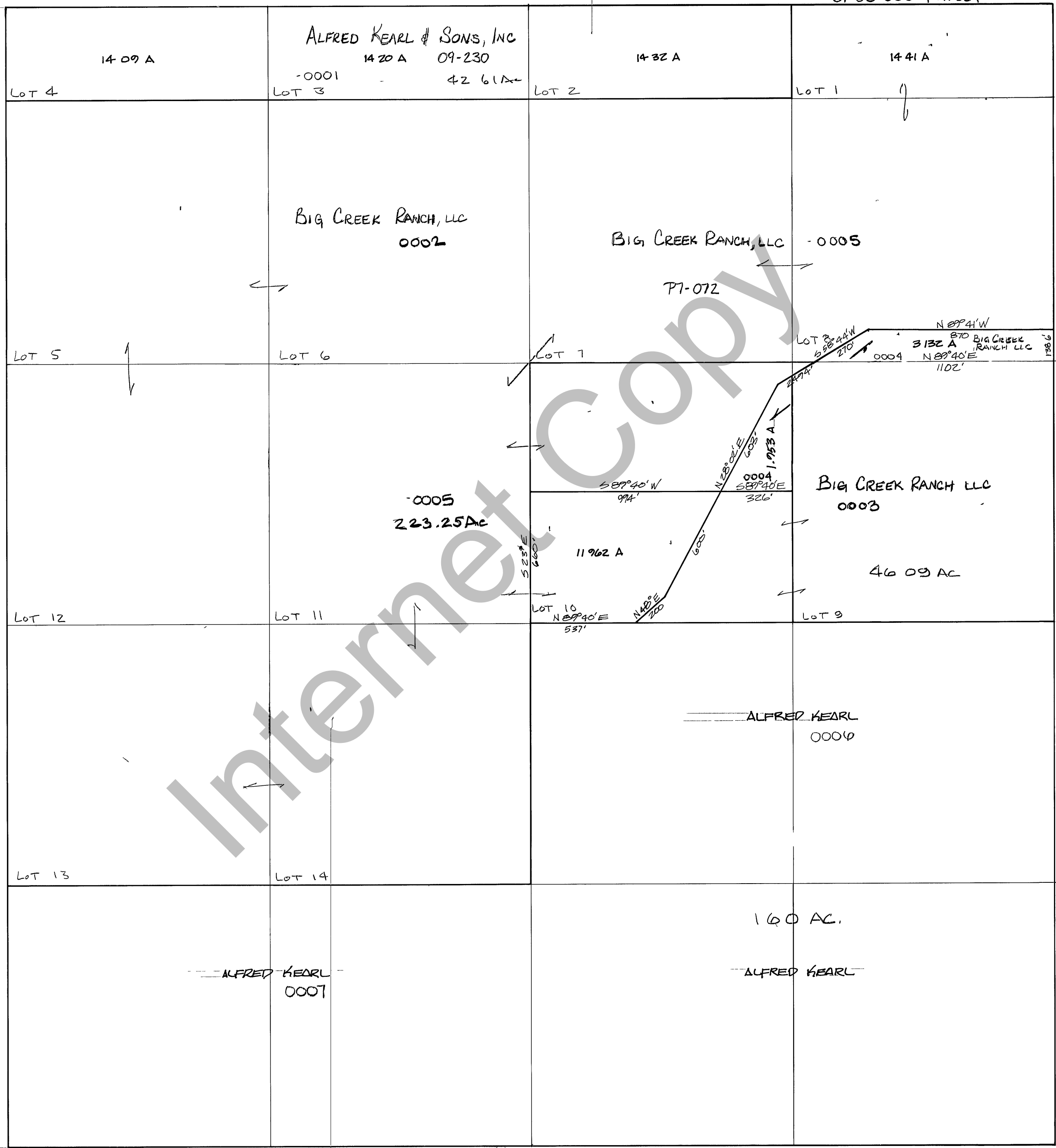


RICH COUNTY  
 SECTION 5, T.12N., R.5E., S.L.B.&M.

31-05-000-Parcel



REVISIONS	

THIS PLAT IS MADE SOLELY FOR THE PURPOSE OF ASSISTING IN LOCATING THE LAND, AND THE RECORDER ASSUMES NO LIABILITY FOR VARIATIONS, IF ANY, WITH AN ACTUAL SURVEY