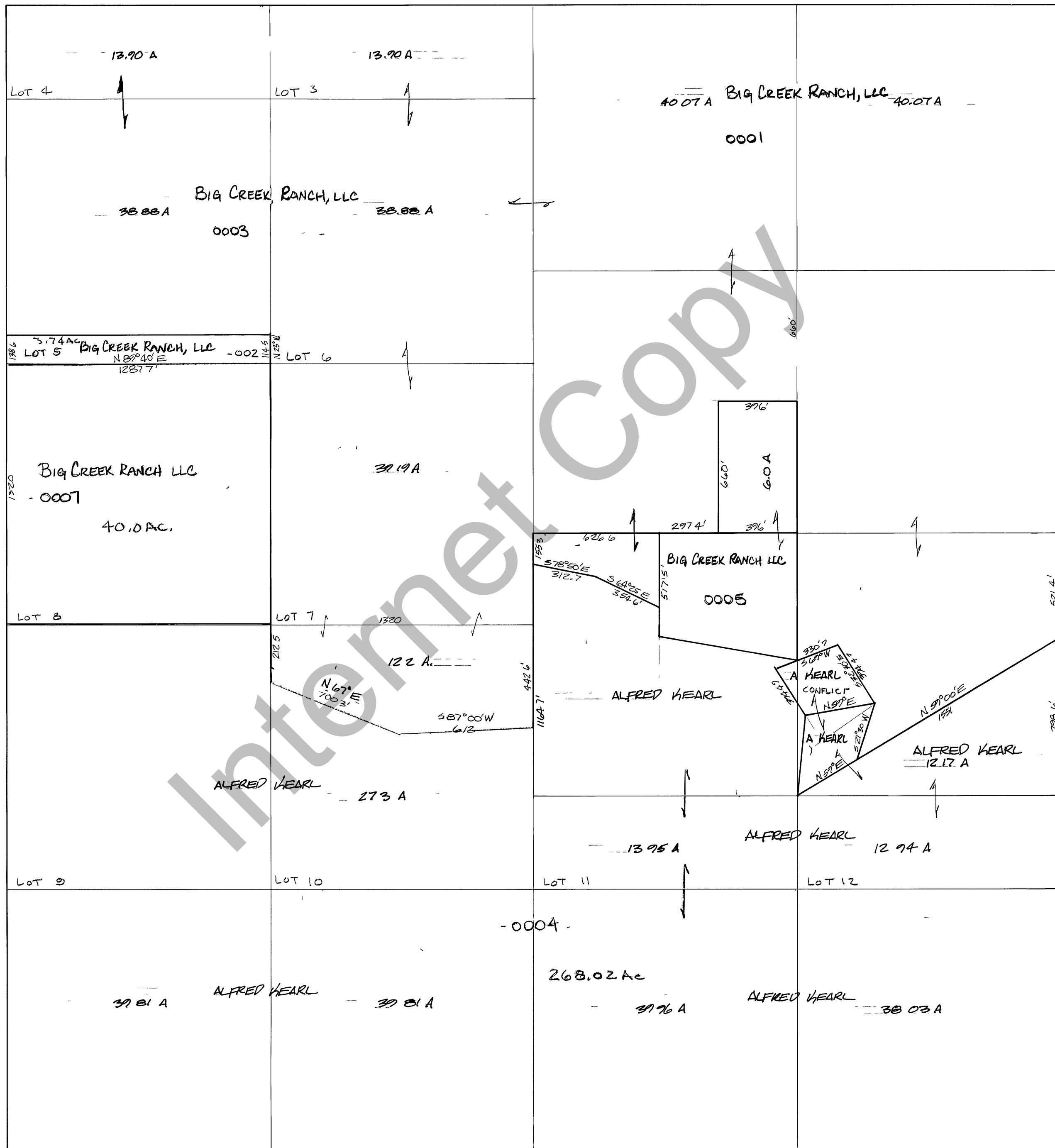


RICH COUNTY  
SECTION 4, T.12N., R.5E., S.L.B.&M.



REVISIONS		

THIS PLAT IS MADE SOLELY FOR THE PURPOSE OF ASSISTING IN LOCATING THE LAND, AND THE RECORDER ASSUMES NO LIABILITY FOR VARIATIONS, IF ANY, WITH AN ACTUAL SURVEY.

Section 4 T 12N R 5E

book page

drawn by GP

date NOV 1978

scale 1" = 400'