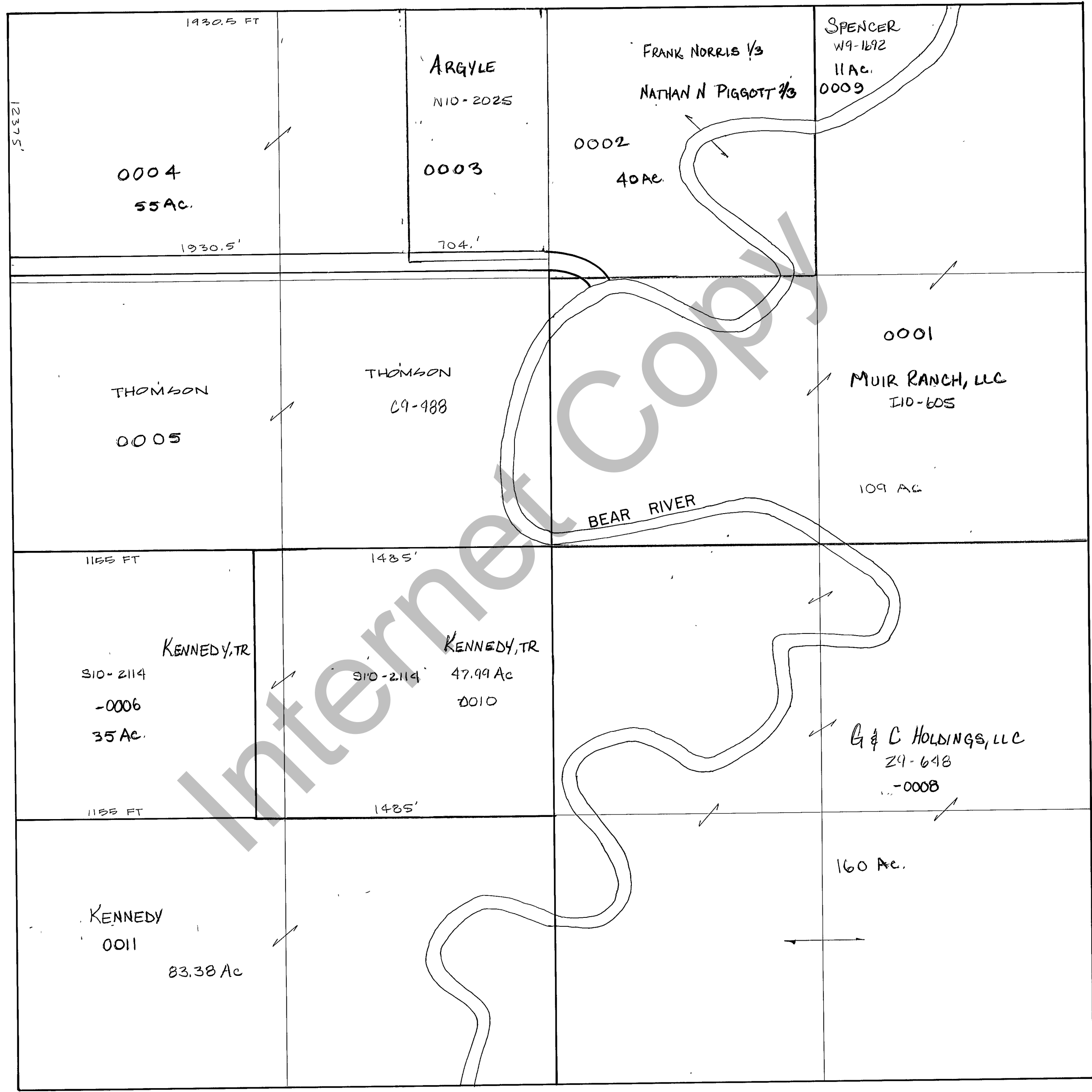


RICH COUNTY  
SECTION 27, T.11N., R.7E., S.L.B.&M.

28-27-000-PARCEL



REVISIONS	

THIS PLAT IS MADE SOLELY FOR THE PURPOSE OF ASSISTING IN LOCATING THE LAND, AND THE RECORDER ASSUMES NO LIABILITY FOR VARIATIONS, IF ANY, WITH AN ACTUAL SURVEY.

Section 27 T.11N. R.7E. book page  
 drawn by GEK date DEC 1978 scale 1" = 400'