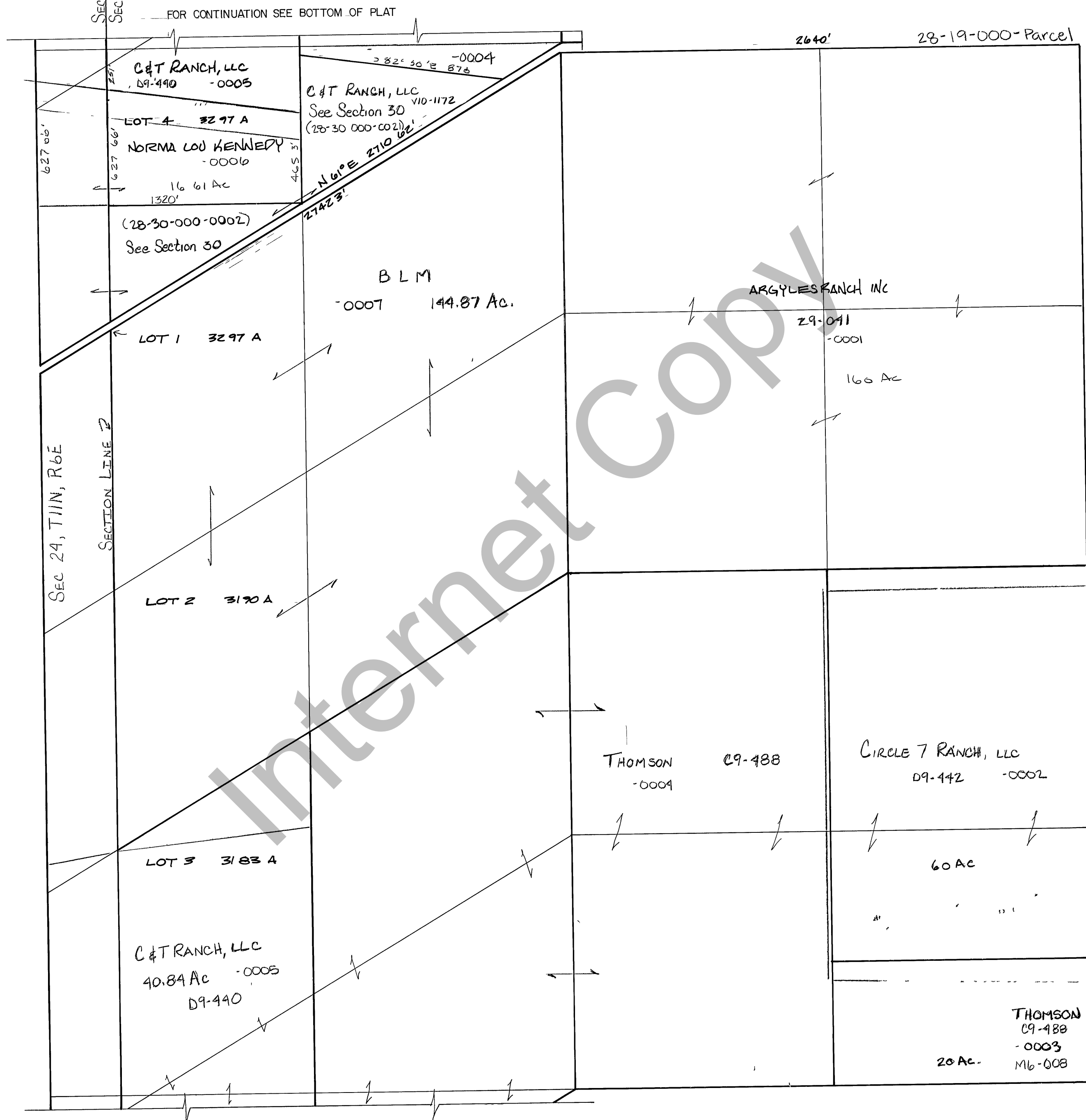


RICH COUNTY
 SECTION 19, T.11N., R.7E., S.L.B.&M.



REVISIONS	

THIS PLAT IS MADE SOLELY FOR THE PURPOSE OF ASSISTING IN LOCATING THE LAND, AND THE RECORDER ASSUMES NO LIABILITY FOR VARIATIONS, IF ANY, WITH AN ACTUAL SURVEY

Section <u>19</u> T <u>11N</u> R <u>7E</u>		book	page
drawn by GP	date DEC 1978	scale 1"=400'	