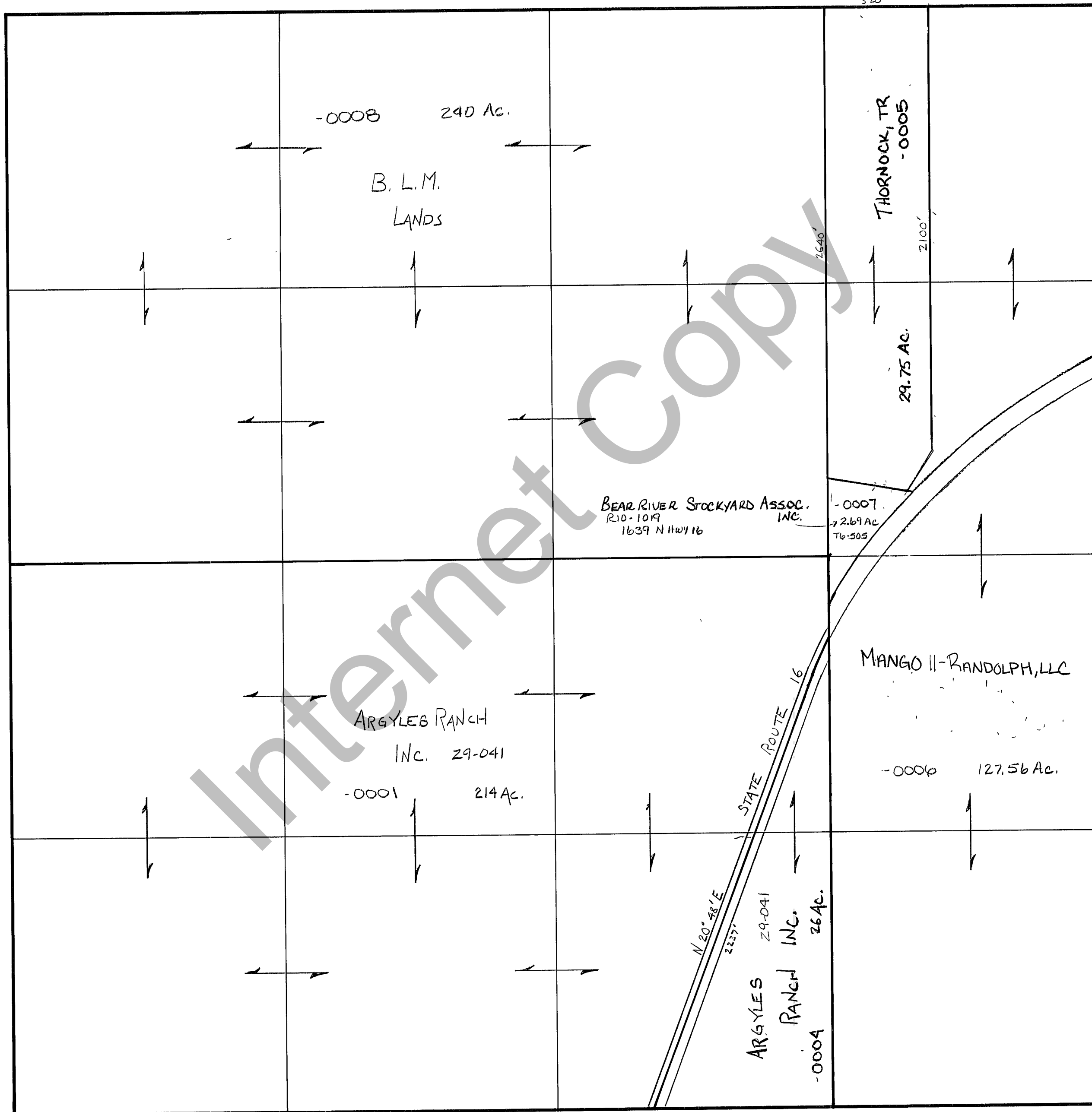


RICH COUNTY
 SECTION 17, T. 11 N. R. 7 E., S.L.B.&M.

SERIAL NO.= 28-17-000-Parcel
 520'



REVISIONS		

THIS PLAT IS MADE SOLELY FOR THE PURPOSE OF ASSISTING IN LOCATING THE LAND, AND THE RECORDER ASSUMES NO LIABILITY FOR VARIATIONS, IF ANY, WITH AN ACTUAL SURVEY.

Section 17 T. 11 N. R. 7 E.
 drawn by DW date 11-79
 book page
 scale 1" = 400'