

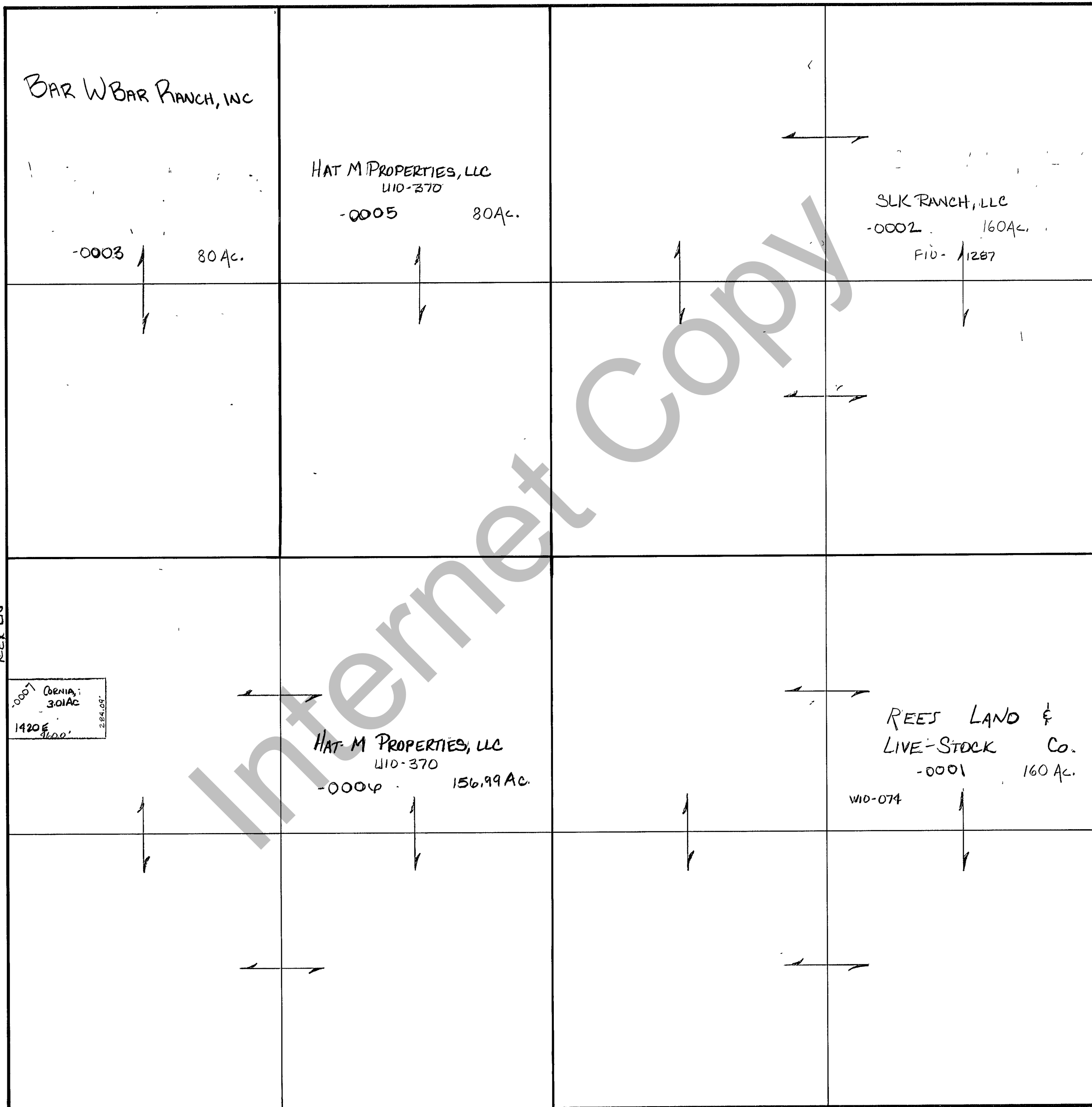
RICH COUNTY  
SECTION 27 , T. 10 N.R. 7 E., S.L.B.&M.

1400 E

1800 E

SERIAL NO.= 24-27-000-PARCEL

2200 E



REX LN

0007 CORNIA;  
3.01 AC  
1420 E 3600' 284.09'

REVISIONS		

THIS PLAT IS MADE SOLELY FOR THE PURPOSE OF ASSISTING IN LOCATING THE LAND, AND THE RECORDER ASSUMES NO LIABILITY FOR VARIATIONS, IF ANY, WITH AN ACTUAL SURVEY.

Section 27 T. 10 N. R. 7 E.	book	page
drawn by DW	date 11-79	scale 1"=400'