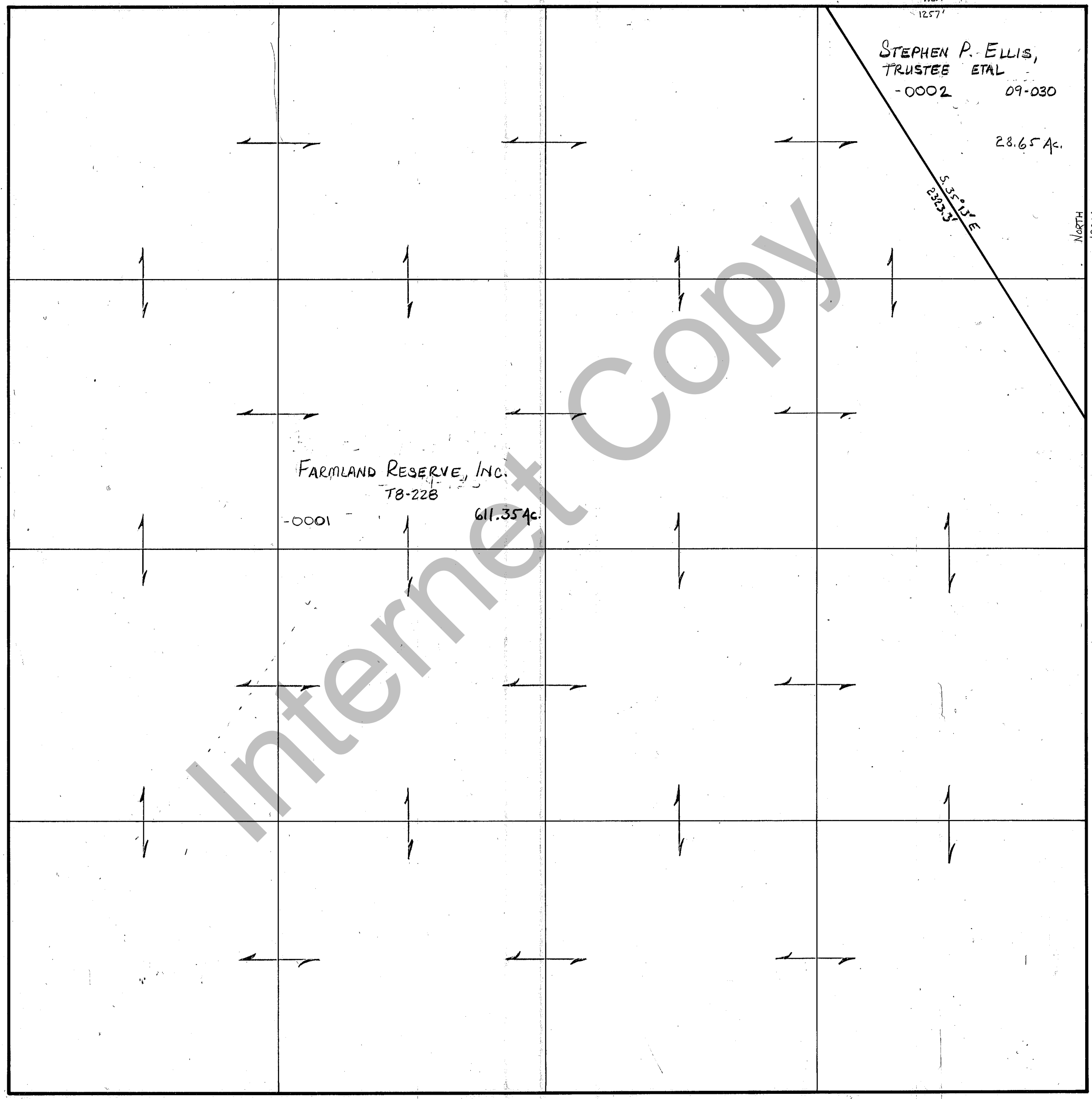


RICH COUNTY
 SECTION 35, T. 9 N.R. 7 E., S.L.B.&M.

SERIAL NO. = 19-35-000-PARCEL



Internet Copy

REVISIONS		

THIS PLAT IS MADE SOLELY FOR THE PURPOSE OF ASSISTING IN LOCATING THE LAND, AND THE RECORDER ASSUMES NO LIABILITY FOR VARIATIONS, IF ANY, WITH AN ACTUAL SURVEY.

Section 35 T. 9 N. R. 7 E. book page
 drawn by DW date 11-79 scale 1"=400'

T.M.S.