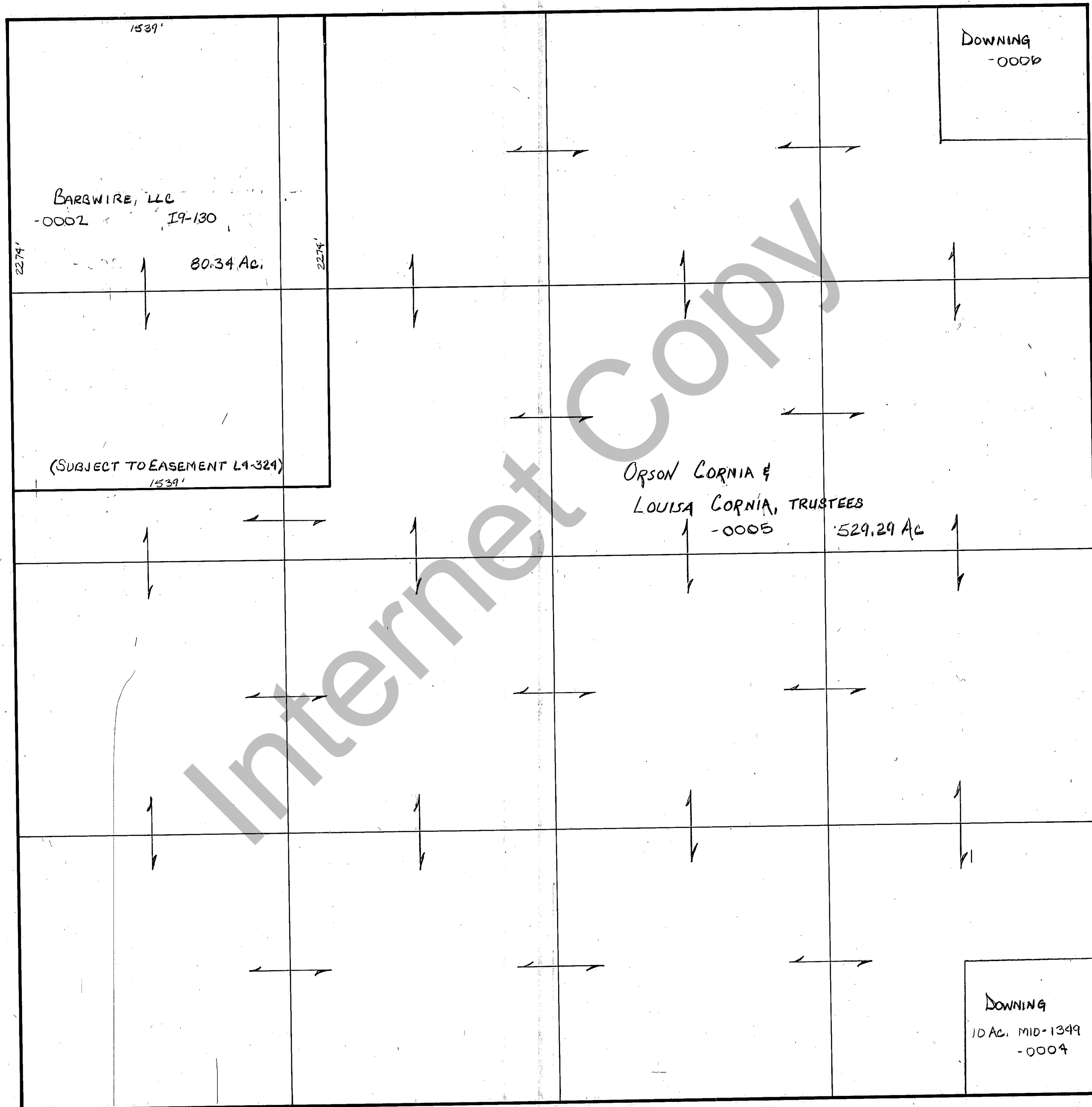


RICH COUNTY  
SECTION 32, T. 9 N.R. 7 E., S.L.B.&M.

SERIAL NO.: 19-32-000-PARCEL



REVISIONS	

THIS PLAT IS MADE SOLELY FOR THE PURPOSE OF ASSISTING IN LOCATING THE LAND, AND THE RECORDER ASSUMES NO LIABILITY FOR VARIATIONS, IF ANY, WITH AN ACTUAL SURVEY.

Section 32 T. 9 N. R. 7E  
 drawn by DW date 11-79

book page  
 scale 1" = 400'

T.M.S.