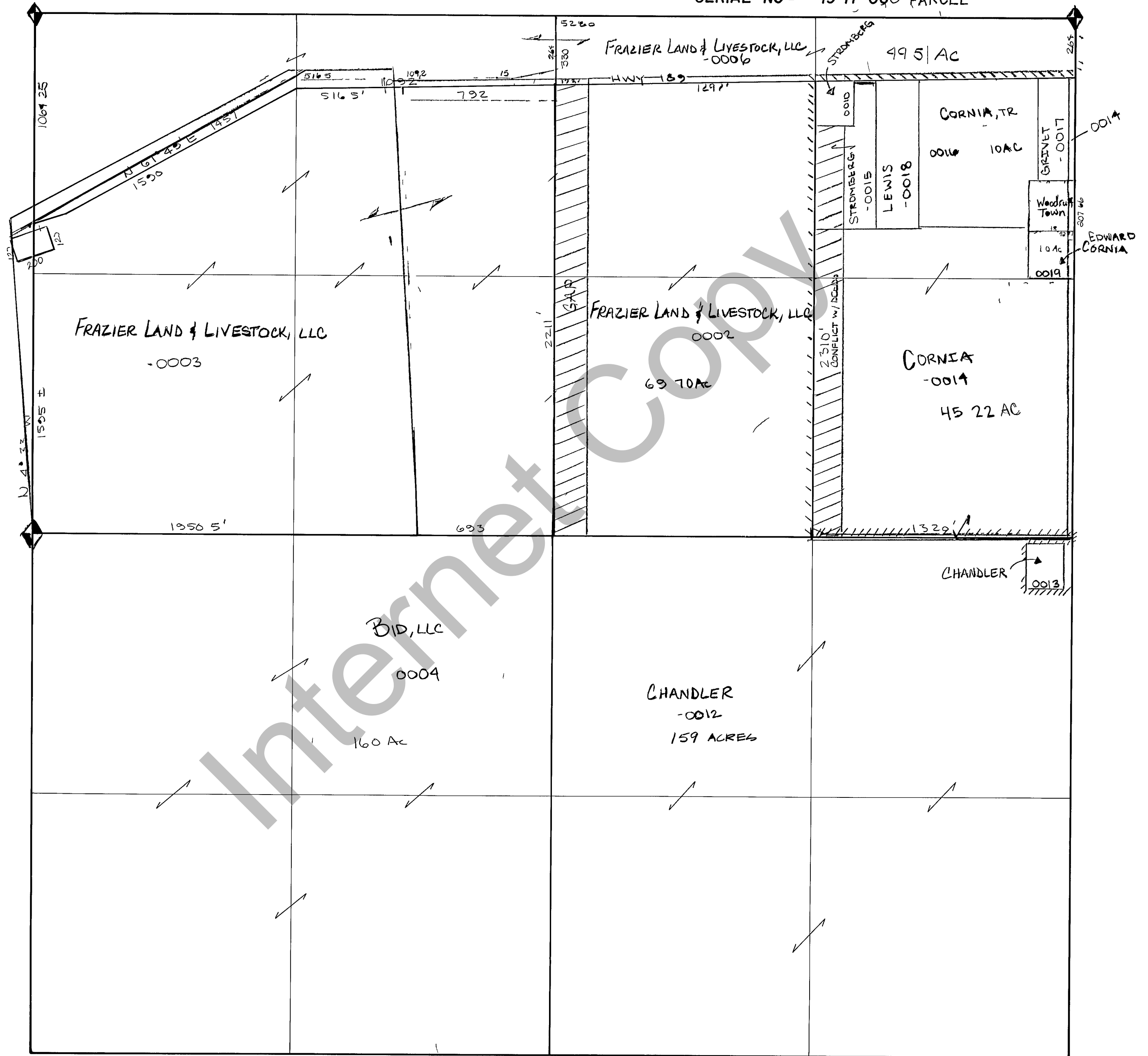


# RICH COUNTY SECTION 17, T9N, R7E., SLB & M

SERIAL NO = 19-17-090-PARCEL



REVISIONS		

THIS PLAT IS MADE SOLELY FOR THE PURPOSE OF ASSISTING IN LOCATING THE LAND AND THE RECORDER AS SUMER TO LIABILITY FOR VARIATIONS, IF ANY WITH AN ACTUAL SURVEY.

Section 17 T 9N R 7E	book	page
drawn by GEK	date DEC 1978	scale 1" = 400'