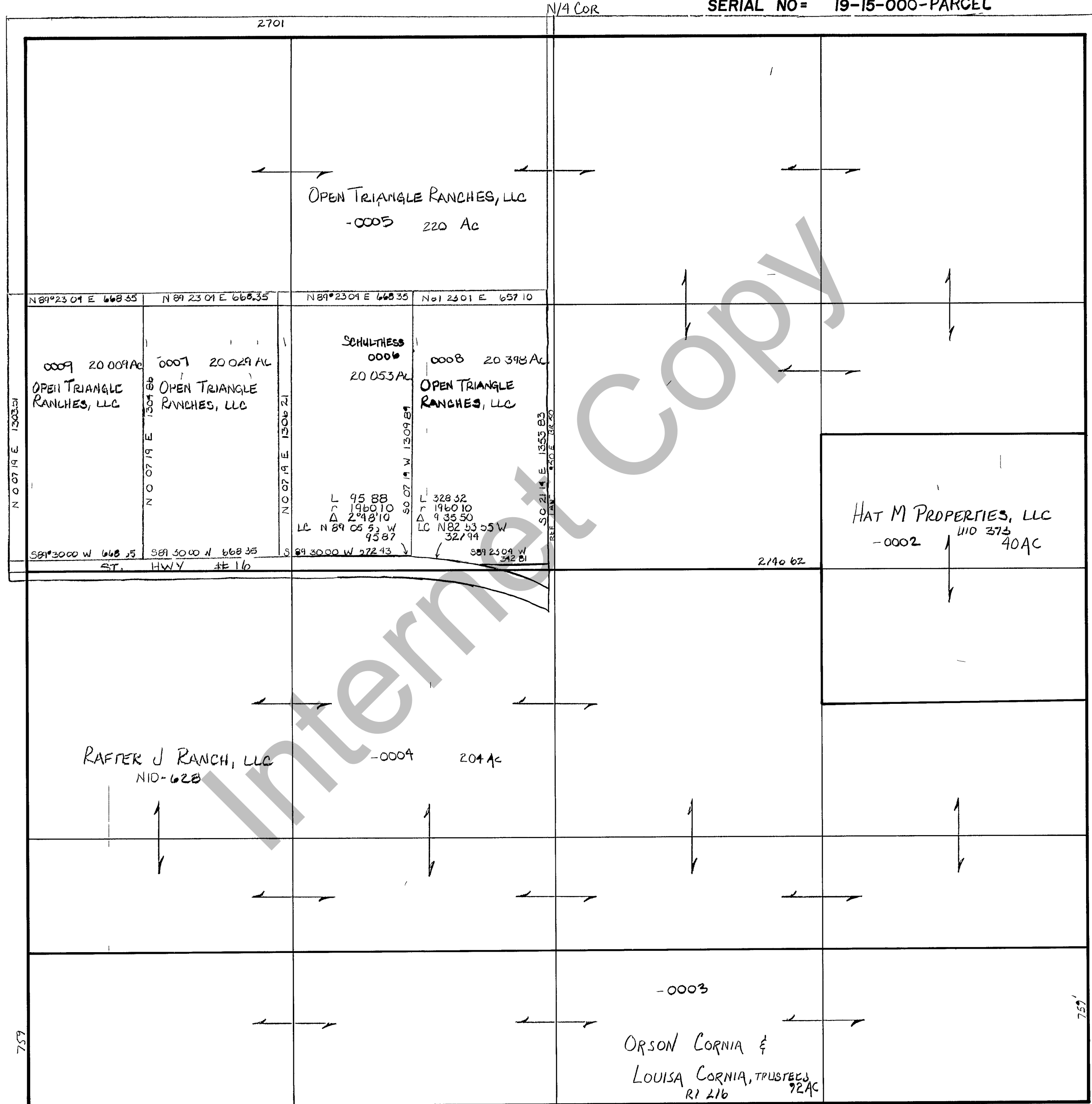


RICH COUNTY
 SECTION 15, T 9 N. R 7 E, S. LB & M

SERIAL NO = 19-15-000-PARCEL



REVISIONS	

THIS PLAT IS MADE SOLELY FOR THE PURPOSE OF ASSISTING IN LOCATING THE LAND AND THE RECORDER ASSUMES NO LIABILITY FOR VARIATIONS IF ANY WITH AN ACTUAL SURVEY.

Section 15, T 9N, R 7E.		book	page
drawn by DW	date 11-79	scale	1" = 400'