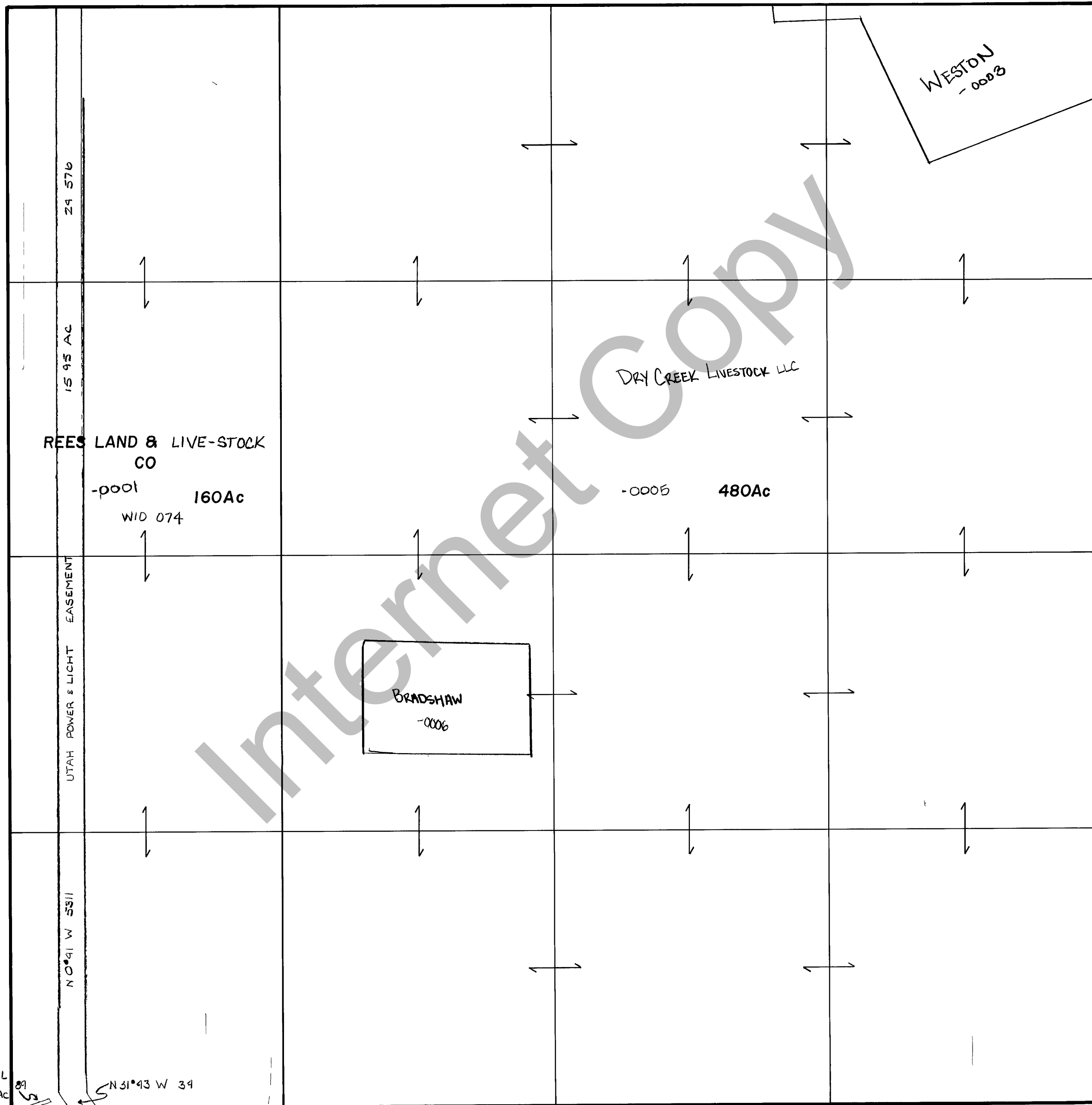


RICH COUNTY
 SECTION 13 T 9 N. R 7 E, SLB & M

SERIAL NO 19-13-000-PARCEL



UTP&L
 573 48' W
 0 02 AC

N 31° 43' W 39'

REVISIONS

THIS PLAT IS MADE SOLELY FOR THE PURPOSE OF ASSISTING IN LOCATING IN LAND AND THE RECORDER ASSUMES NO LIABILITY FOR VARIATIONS, IF ANY, WITH AN ACTUAL SURVEY.

Section 13 T 9 N. R 7 E. book page
 drawn by DRW date 6-80 scale 1" = 400'