

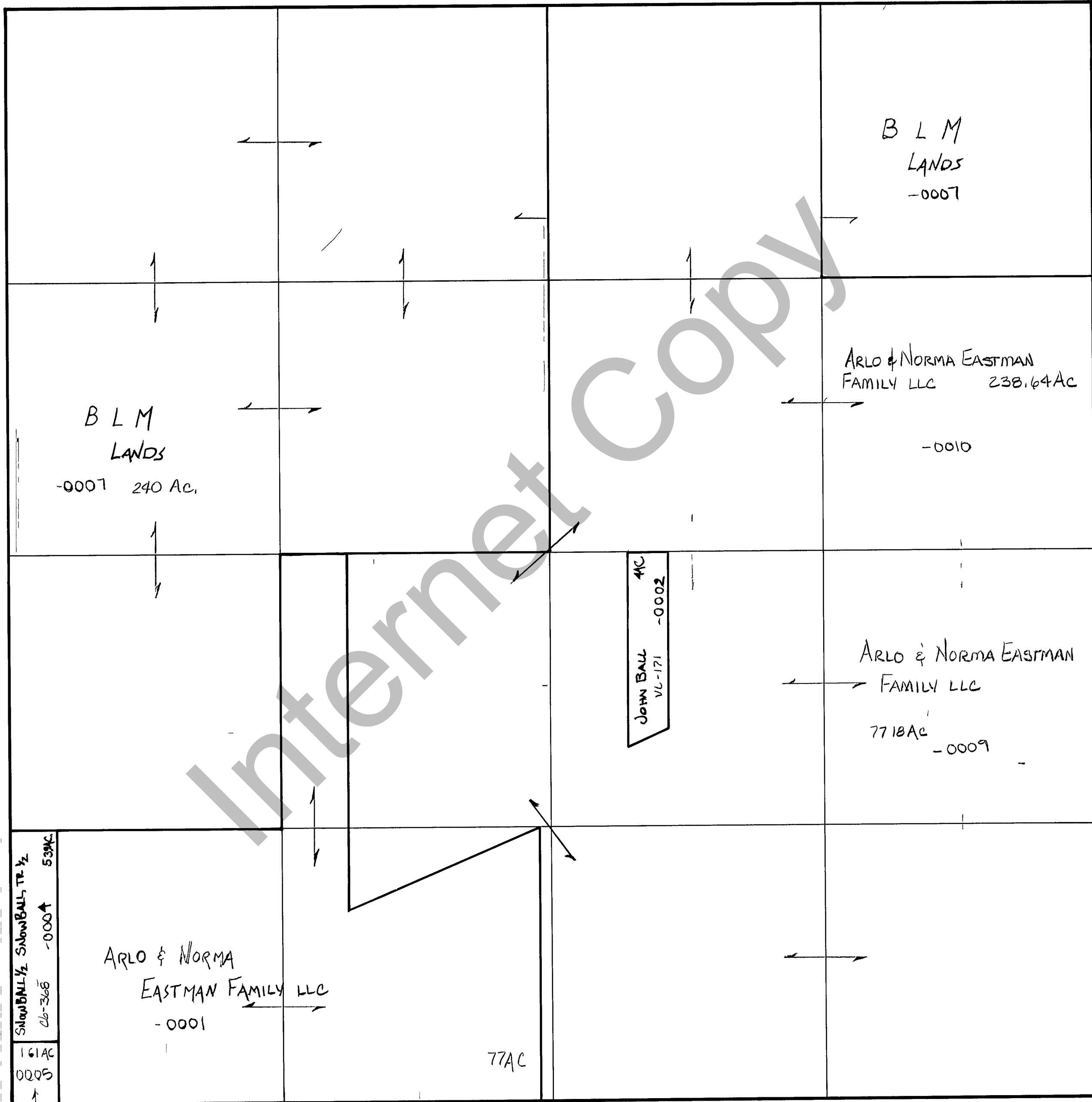
RICH COUNTY
 SECTION 13, T 9 N, R 6 E, SLB & M

SERIAL NO= 18-13-000-PARCEL

2700 W

1900 W

25 N



EIGHT BAR RANCH, LLC

REVISIONS		

THIS PLAT IS MADE SOLELY FOR THE PURPOSE OF ASSISTING IN LOCATING THE LAND AND TIES TO BORDER ASSUMES NO LIABILITY FOR ERRORS, IF ANY, WITH AN ACTUAL SURVEY

Section 13 T 9N R 6E book page
 drawn by DW date 10-79 scale 1"=400'