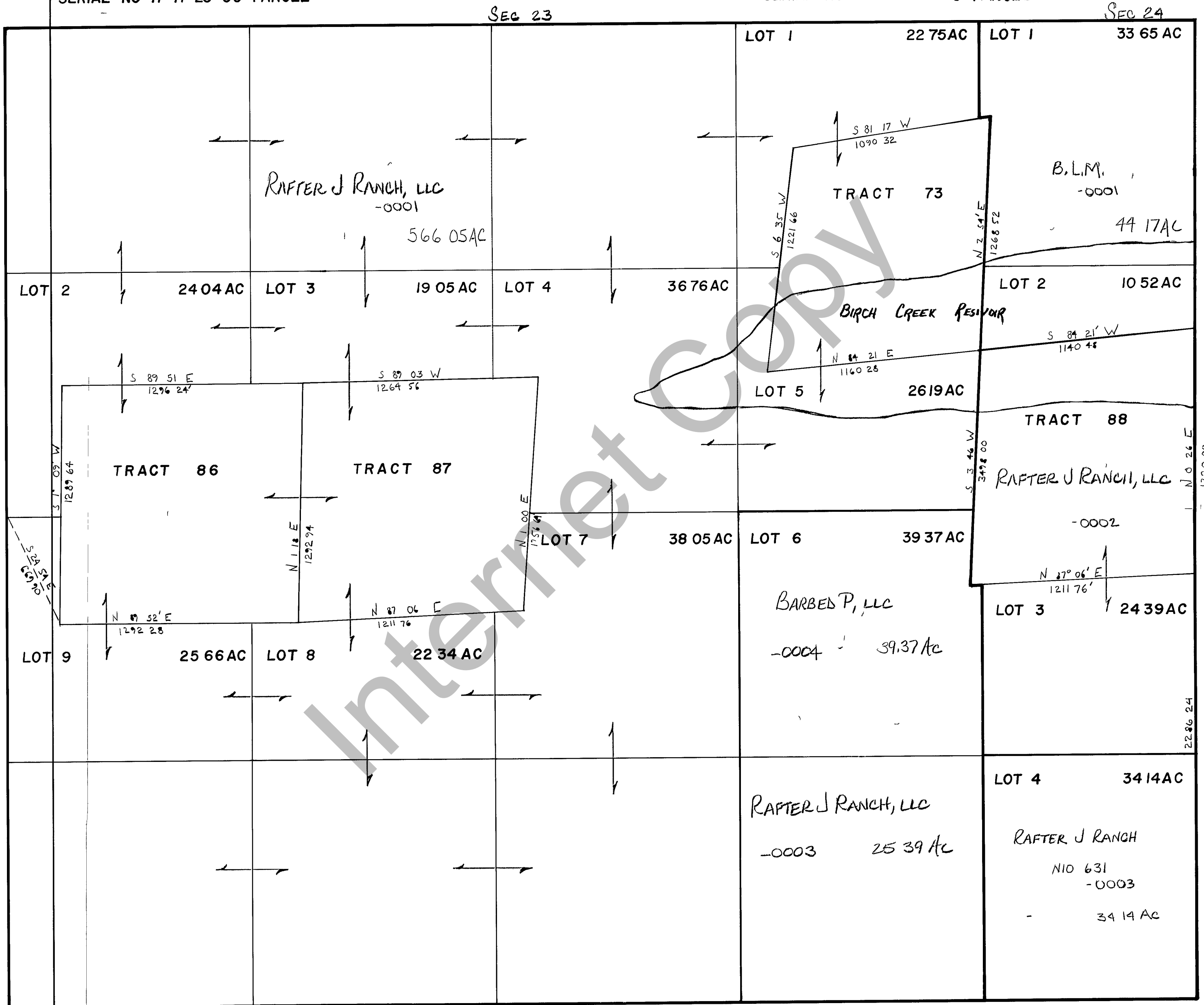


RICH COUNTY  
 SECTION 23&24, T 9N R 5E, SLB&M

SERIAL NO=17-17-23-00-PARCEL

SERIAL NO = 17-24-000-PARCEL



REVISIONS	

THIS PLAT IS MADE SOLELY FOR THE PURPOSE OF ASSIST IN LOCATING THE LAND AND IT'S RECORDS AS GUMES NO LIABILITY FOR VARIATIONS, IF ANY WITH AN ACTUAL SURVEY.

Section 23/24 9N R 5E

drawn by DW date 10-79

book page

scale 1"=400'

T.M.S