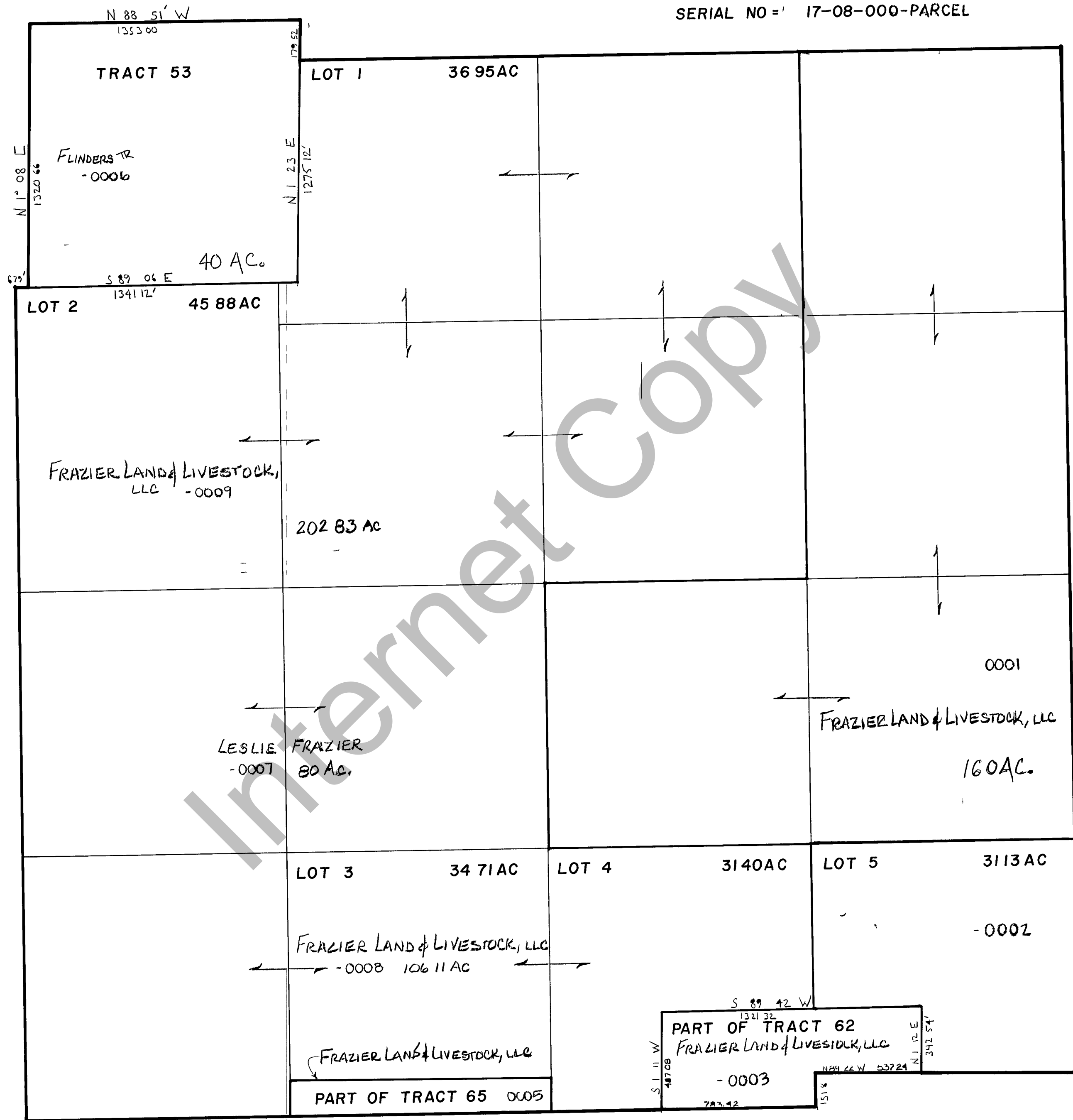


RICH COUNTY
 SECTION 8, T 9N R 5E, SLB & M

SERIAL NO = 17-08-000-PARCEL



REVISIONS	

THIS PLAT IS MADE SOLELY FOR THE PURPOSE OF ASSISTING IN LOCATING THE LAND AND THE RECORDER ASSUMES NO LIABILITY FOR VARIATIONS, IF ANY, WITH AN ACTUAL SURVEY.