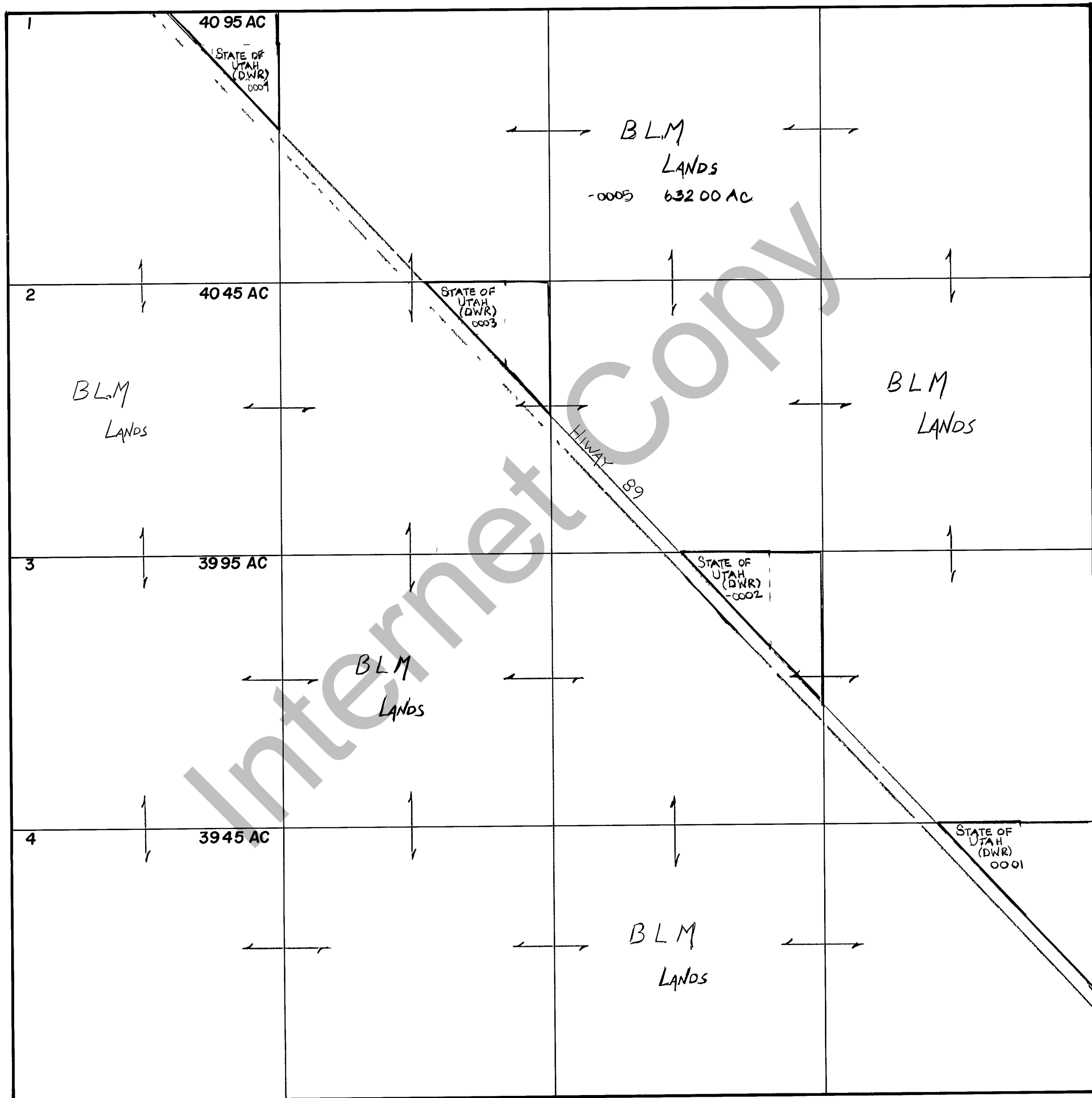


# RICH COUNTY

## SECTION 7, T 8N R 8E, SLB & M

SERIAL NO = 15-07-000-PARCEL



### REVISIONS


THIS PLAT IS MADE SOLELY FOR THE PURPOSE OF ASSISTING IN LOCATING THE LAND AND THE RECORDER ASSUMES NO LIABILITY FOR VARIATIONS IF ANY, WITH AN ACTUAL SURVEY.

Section 7 T 8N R 8E

book page

drawn by D E date 10-79

scale 1" = 400'