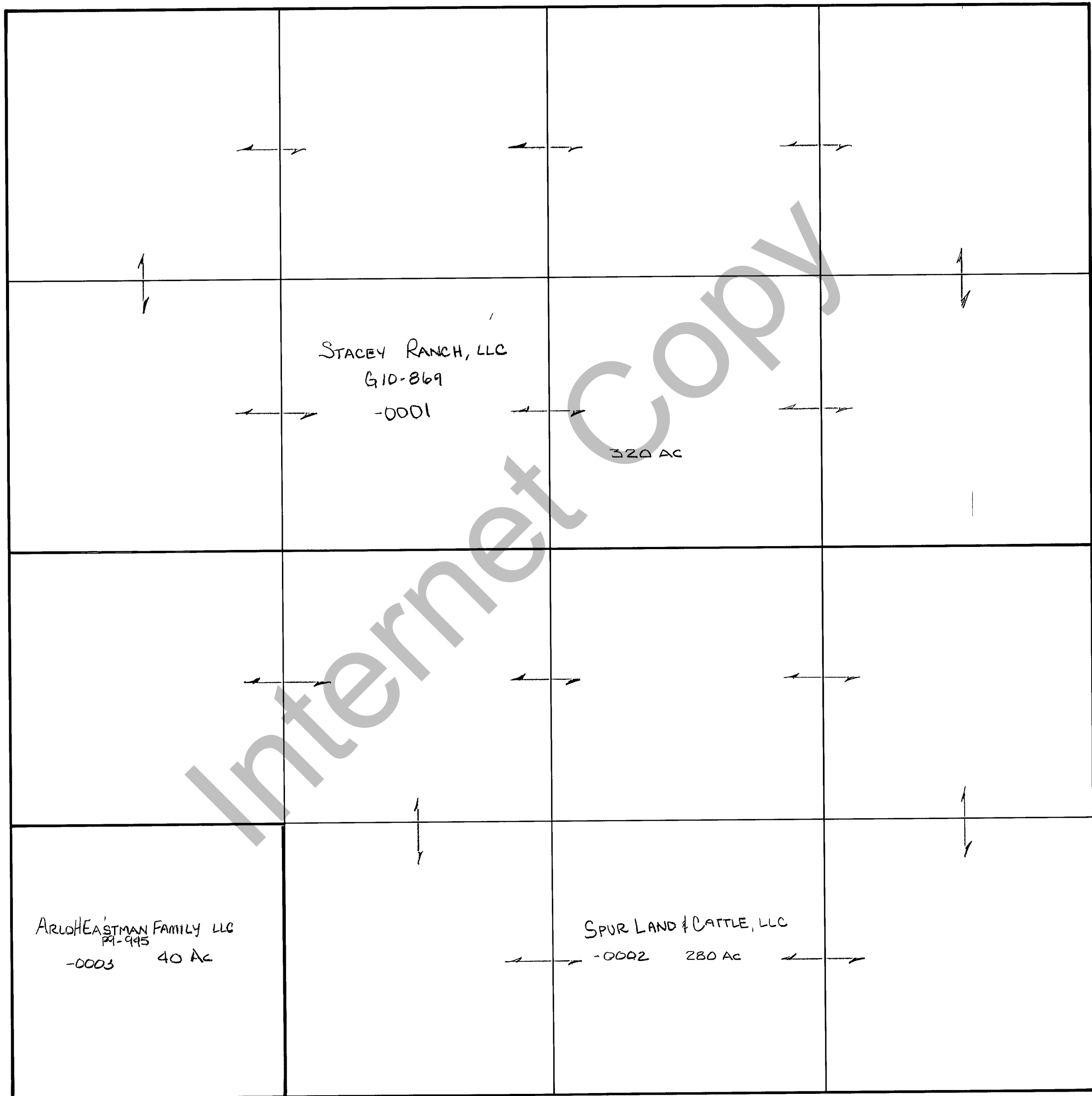


RICH COUNTY
 SECTION 24, T 8 N R 5 E, SLB&M

SERIAL NO = -12-24-000-PARCEL



REVISIONS

08-10-79		

THIS PLAT IS MADE SOLELY FOR THE
 PURPOSE OF ASSISTING IN LOCATING
 THE LAND AND THE RECORDS AS
 SHOWN. THE DRAWER ASSUMES NO LIABILITY FOR VARIATIONS,
 IF ANY, WITH AN ACTUAL SURVEY

Section 24 T 8 N R 5 E

drawn by DE date 9-79

book page

scale 1" = 400'