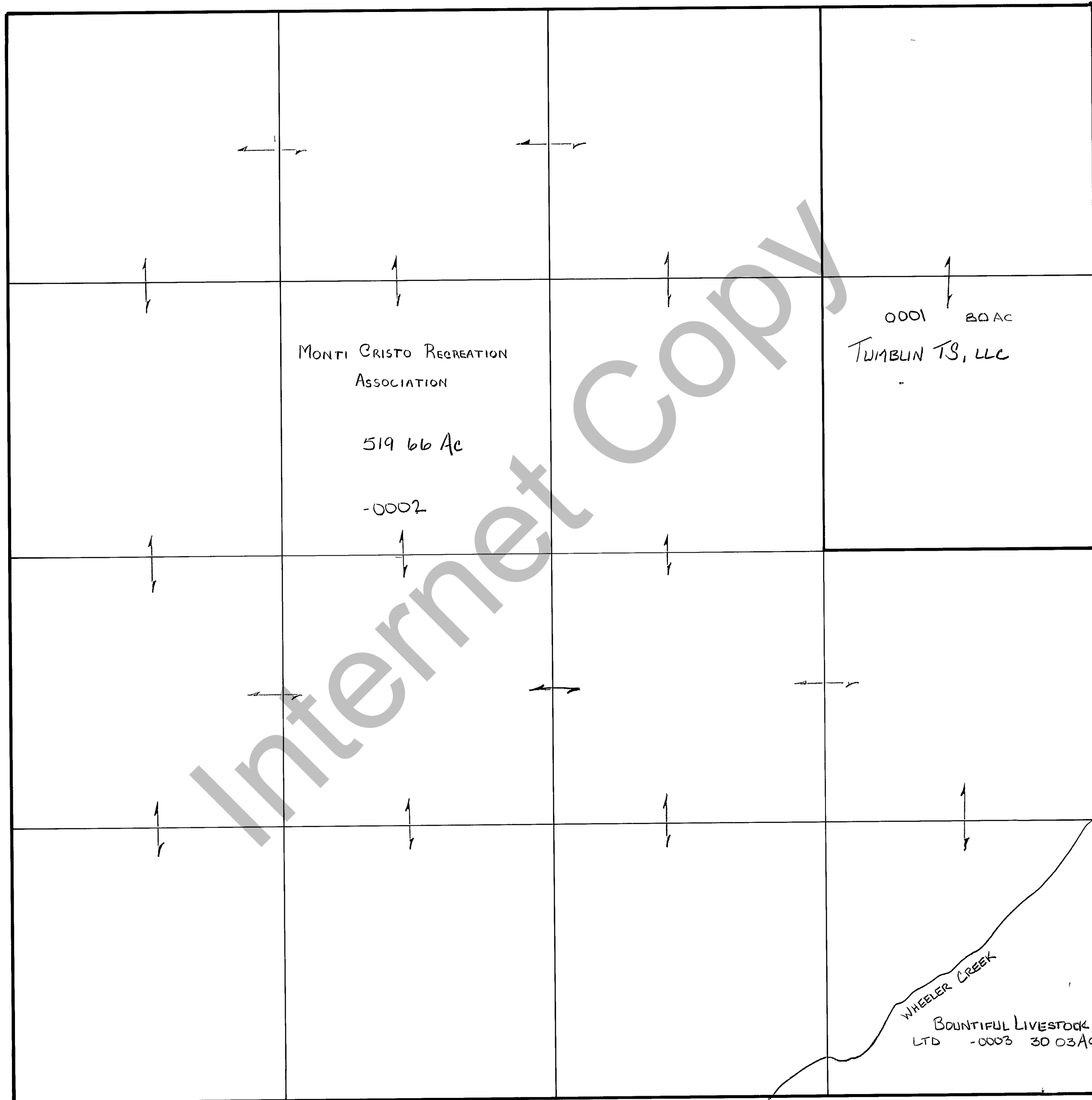


RICH COUNTY
SECTION 17, T 8 N R 5 E, SLB & M.

SERIAL NO = -12-17-000-PARCEL



Internet Copy

REVISIONS

12-10-79

THIS PLAT IS MADE SOLELY FOR THE PURPOSE OF ASSISTING IN LOCATING THE LAND AND THE RECORDER ASSUMES NO LIABILITY FOR VARIATIONS IF ANY WITH AN ACTUAL SURVEY

Section 17 T 8 N R 5 E

drawn by DE date 9-79

book page

scale 1" = 400'