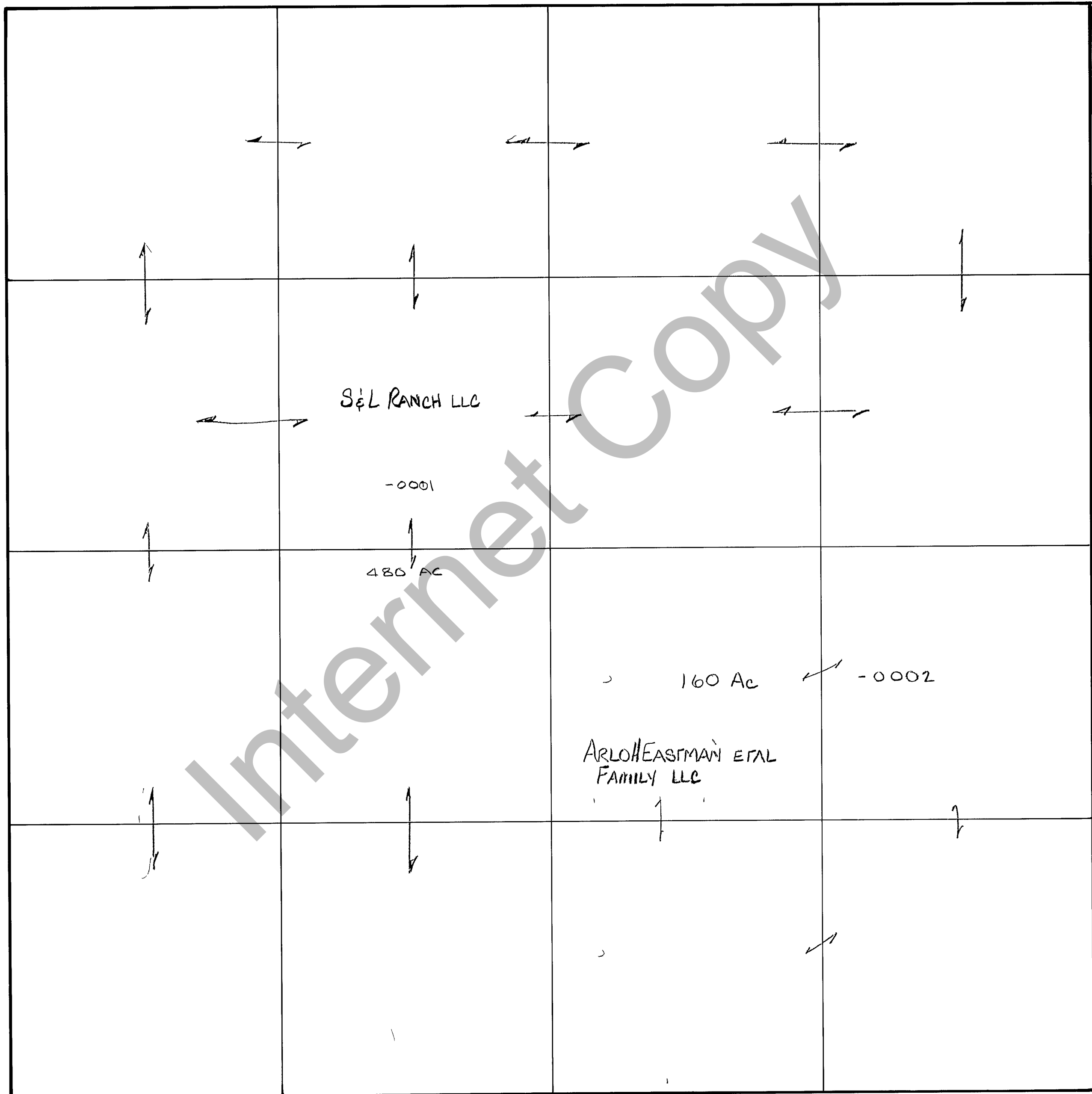


RICH COUNTY
 SECTION 15, T 8 N R 5 E, SLB&M

SERIAL NO = -12-15-000 PARCEL



REVISIONS

08-10-79		

THIS PLAT IS MADE SOLELY FOR THE PURPOSE OF ASSISTING IN LOCATING THE LAND AND THE RECORD'R AS SUMES NO LIABILITY FOR VARIATIONS, IF ANY WITH AN ACTUAL SURVEY

Section 15 T 8N R 5E

drawn by DE date 9-79

book page

scale 1"=400'