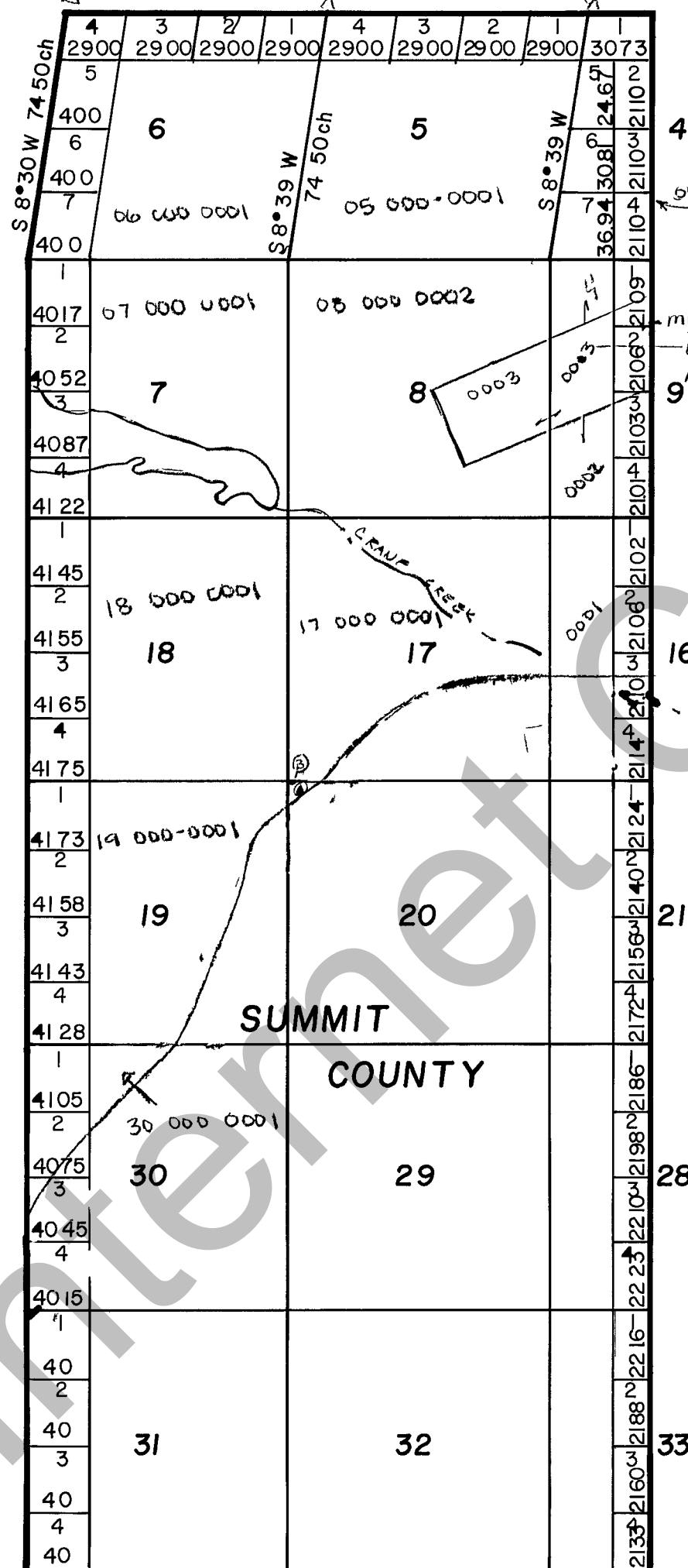


RICH COUNTY
 T.6N.R.8E.,S.LB.&M.

SERIAL NO= 05-SEC-00-PARCEL



EVANSTON - Uinta County
 AIRPORT JOINT POWERS BOARD
 FARMLAND RESERVE, INC
 TB-228

WYOMING

- Ⓐ JENSEN 09 237
-0001
- Ⓑ FARMLAND RESERVE, INC
-0002 TB 251

REVISIONS		THIS PLAT IS MADE SOLELY FOR THE PURPOSE OF ASSISTING IN LOCATING THE LAND AND THE RECORDER ASSUMES NO LIABILITY FOR VARIATIONS IF ANY WITH AN ACTUAL SURVEY	Section <u>T 6N R 8E</u>		book page
<u>NS 10-79</u>			drawn by DE	date 9-79	scale 1"=3000'