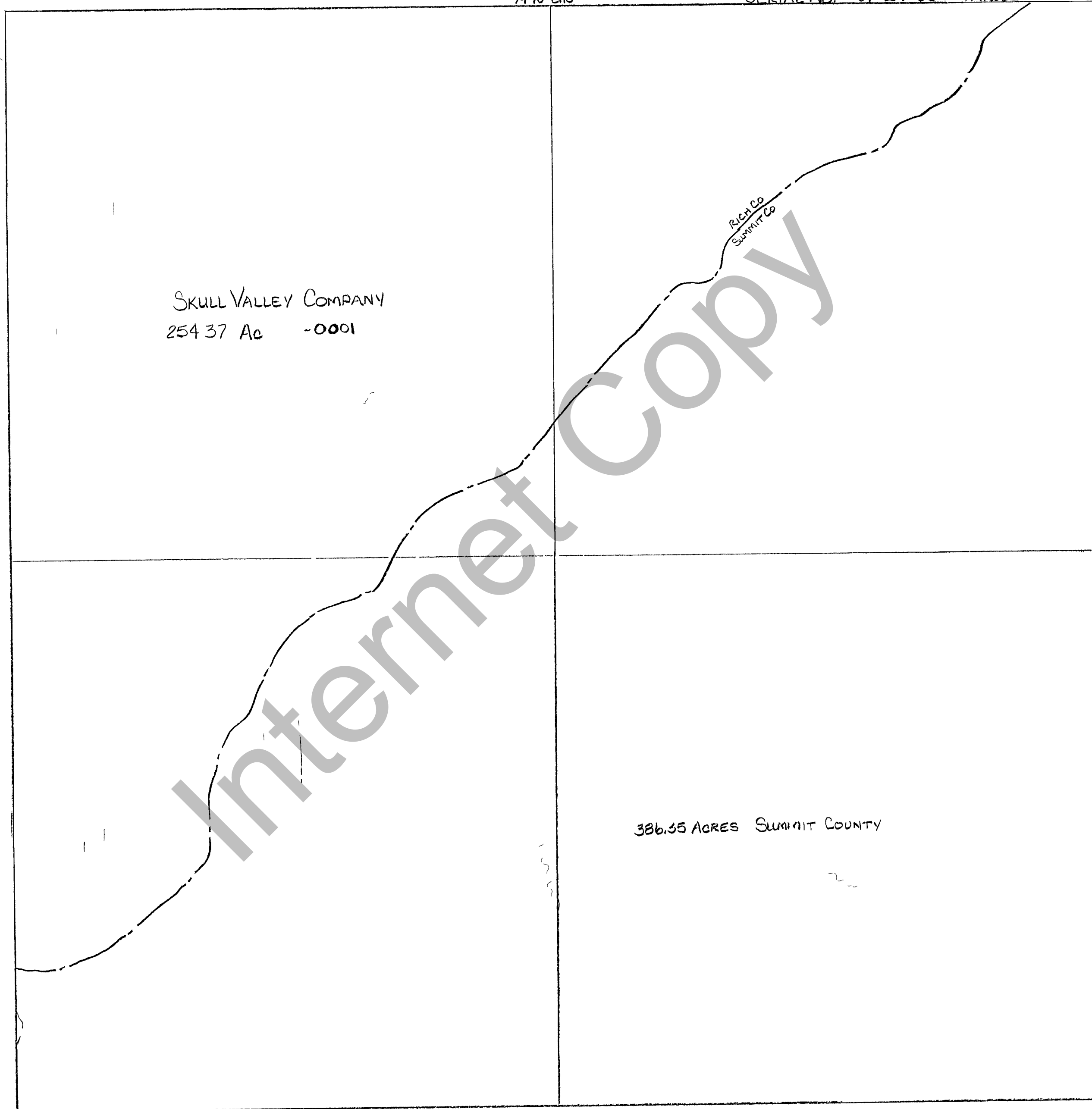


RICH COUNTY
 SECTION 24 T 5 N R 6 E, SLB&M

NOTE COUNTY BOUNDARY IS FROM
 U.S.G.S. SHEARING CORRAL, UT
 (1968)

13
 7970 CHS

SERIAL NO. 01-24-000 PARCEL



7960 CHS

25

REVISIONS		

THIS PLAT IS MADE SOLELY FOR THE
 PURPOSE OF ASSISTING IN LOCATING
 THE LAND AND THE RECORDER AS
 SUMES NO LIABILITY FOR VARIATIONS
 IF ANY WITH AN ACTUAL SURVEY

Section 24 T 5 N R 6 E

book page

drawn by dla

date 12/90

scale 1" = 400'