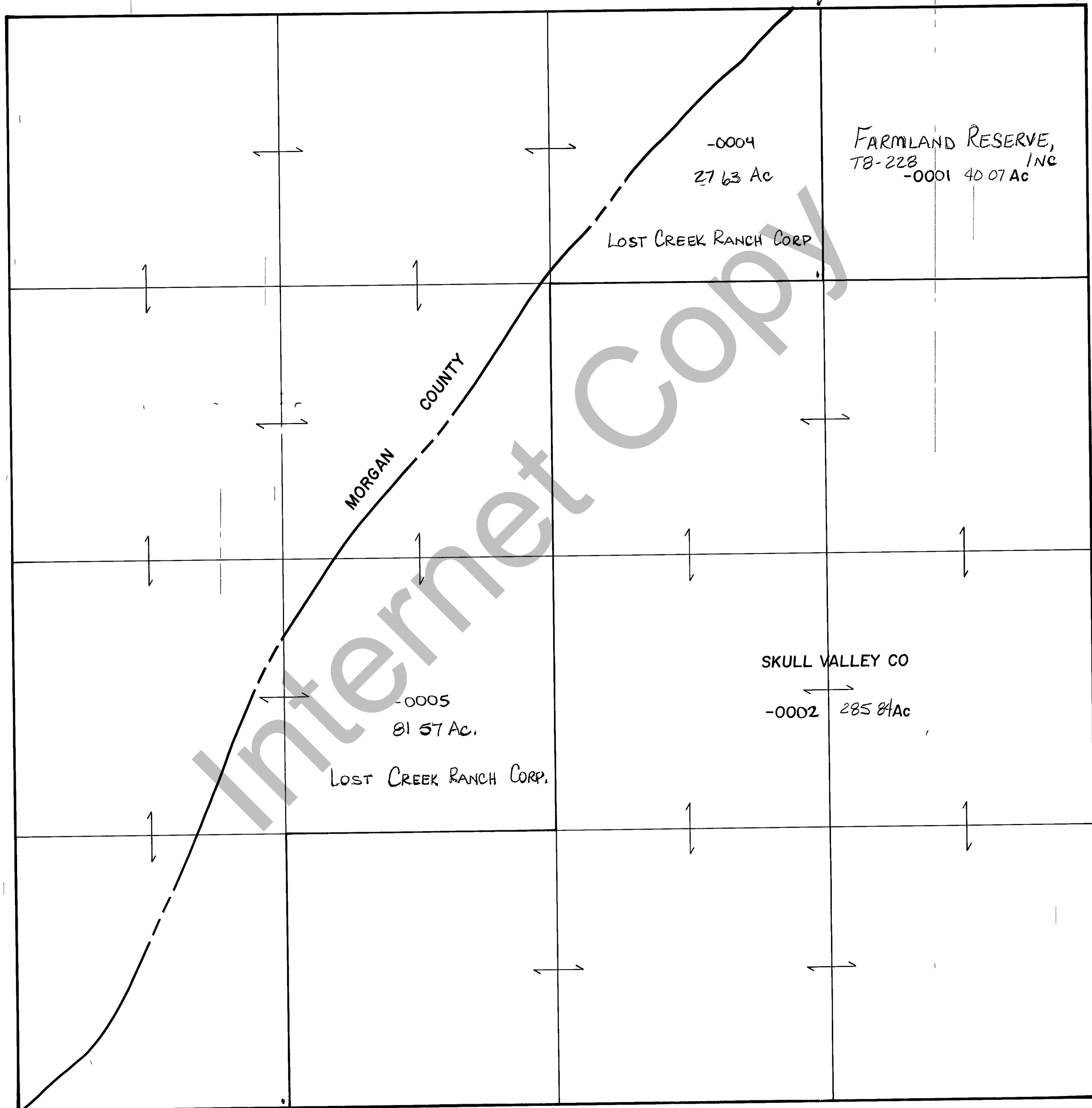


RICH COUNTY

SECTION 14 T 5 N. R 6 E, SLB&M

SERIAL NO -01-14-000-PARCEL



Internet Copy

REVISIONS	

THIS PLAT IS MADE JOINTLY FOR THE PURPOSE OF ASSIGNING INTERESTS IN THE LAND AND THE COSTS OF SURVEY AND LIABILITY FOR VARIATIONS, IF ANY, WITH AN EQUAL SURVEY.

Section 14 T 5N. R 6E.	book _____ page _____
drawn by DW date 6-80	scale 1"=400'